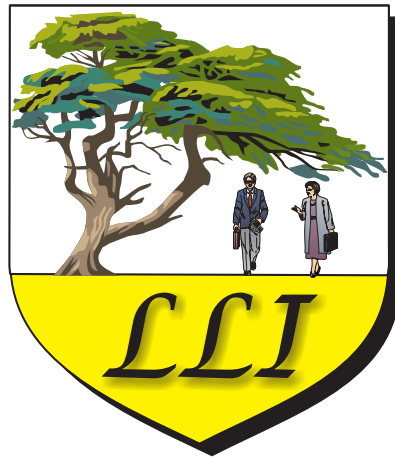




# *Winter/Spring 2012 Program*



## **Lifetime Learning Institute**

c/o Division of Continuing Education, NOVA Annandale

8333 Little River Turnpike

Building CF, Room 218

Annandale, VA 22003-3743

Phone: (703) 503-0600 / FAX: (703) 503-5350

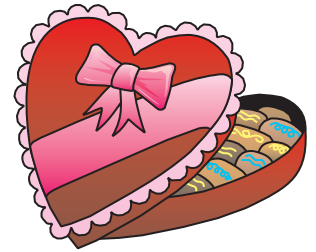
Website: <http://lli.nova.org>

E-Mail: [llinova@juno.com](mailto:llinova@juno.com)





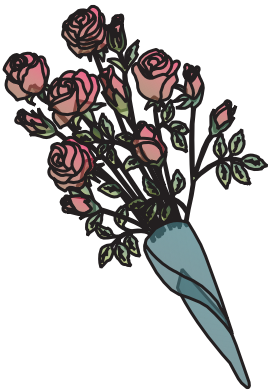
Celebrate  
*Valentine's Day*  
early



at the  
*Annual Valentine's Day Open House*

Sponsored by  
the LLI Poetry Group  
Friday, February 10  
2:00 p.m. to 4:00 p.m.

Little River United Church of Christ,  
Social Hall



## General Information

### What Is LLI?

Sponsored by Northern Virginia Community College (NOVA), the Lifetime Learning Institute of Northern Virginia (LLI/NOVA) is a non-profit, member-run organization dedicated to providing continuing educational opportunities to older adults of all backgrounds and income levels. LLI/NOVA is a member of the Elderhostel Institute Network (EIN) and benefits from the services EIN provides in program development.

LLI membership is especially attractive to individuals 50 years old or older (retired or semi-retired), who are interested in pursuing intellectual enrichment and enjoying social interaction with their peers.

LLI:

- is governed and financed by members
- is supported by member-led planning, administration, and instruction
- provides non-credit, non-degree courses
- offers educational, cultural, and social events
- recognizes that physical and mental health are major elements of vital aging.

### What Do We Have to Offer?

- Participation in courses and special interest groups throughout the year, usually without charge.
- Participation in day and overnight trips at the special membership rate.
- Participation in the group overseas Study/Travel program.
- Attendance at social events such as the annual picnic and winter holiday luncheon.
- Monthly newsletter.
- And hopefully, new friendships.

In addition, affiliation with both NOVA and EIN means that, as a member of LLI/NOVA, you are entitled to a Community Patron card, obtained from the NOVA library by showing a picture ID. This entitles members to use the NOVA library, located on the third floor of the Godwin Building. Up to three books can be charged out for three weeks; they can be renewed online for an additional period. Go to <http://www.nvcc.edu/library> for more information. There is no cost for the card.

### How Are the Courses Organized?

Courses generally consist of one to ten 90-minute sessions, are informal, and frequently include group discussion. They are taught by outside faculty and by your fellow LLI members. Most courses are free to members, but some include assigned reading and purchase of a textbook, or require a small materials fee.

### When Are the Courses and Where?

Courses are offered throughout the year, subdivided into Winter/Spring, Summer, and Fall semesters. They are typically held on weekdays between the hours of 10:00 a.m. and 3:00 p.m. The courses are held on the NOVA Annandale campus and off-campus in churches, community centers and other suitable locations.

### How Do I Become a Member and What Is the Cost?

Complete a membership application form found on pages 25 and 27, and mail with your check to the address shown. The current annual membership fee is \$110. The membership period is for 12 months beginning with the month in which dues are paid.

### How Do I Register for Courses and Tours?

Complete a course registration form found on pages 21 and 23, listing the courses you wish to attend *in order of preference*. Mail to the LLI office with a self-addressed, stamped envelope and any applicable fees as soon as possible; *registration for courses closes Wednesday, December 21, 2011*. Registration forms received after that date will be considered only if there are spaces remaining in the courses you select. Your registration form will be mailed back to you in your self-addressed envelope shortly after the closing date, but in advance of the first class, indicating whether you have been accepted, wait-listed, or whether the class has been canceled. **As a courtesy to other LLI members, please call the Coordinator listed in the specific course description if you will not be able to attend part or all of a course after you have been accepted. This will give members on a waiting list an opportunity to attend.**

Registration for the trip should be submitted on the separate form provided. Please remember to sign the "Assumption of Risk and Acknowledgment of Responsibility" statement.

LLI courses are open only to those LLI members who have registered and been accepted into the course unless otherwise specified. **Please note that if you are wait-listed for a course, you are not “accepted” unless notified. The next time the course is offered, you must re-register but will be given priority acceptance.**

### What Is the Monthly Forum?

Members and non-members are warmly welcomed as guests to attend the Speakers Program and Open House Forum. The Forum is held monthly (except December and during the summer) at 10:00 a.m. in the Richard J. Ernst Community Cultural Center (see map on page 4) on the NOVA Annandale Campus (see page 5 for schedule). For more information, call the LLI office at (703) 503-0600 or check the website at <http://lli.nova.org>; also see information in the LLI monthly newsletter. Persons attending these Forums should park in the garage on Center Drive next to the Ernst Center. There is a \$1.00 per hour charge to park in the garage.

### Class Cancellations

**For Classes:** If the Fairfax County Public Schools (FCPS) cancel school for the day due to inclement weather or other emergency, all LLI classes, Forums, and other activities, **(except for Trips/Travel—see below)**, are cancelled regardless of class location. LLI morning classes are cancelled if the FCPS announces a two-hour delay in class openings; LLI afternoon classes are cancelled if the FCPS announces early dismissal.

**For Trips/Travel:** The Trip Committee Chair is responsible for the decision to cancel a trip.

### When Is the Registration Deadline?

The registration deadline for the courses in this catalog is **Wednesday, December 21, 2011**. See full addresses of course locations starting on page 17.

## Table of Contents

### ART/MUSIC

A History of Impressionism, Part III . . . . .	9
How to Listen to and Understand Opera . . . . .	11
Museum Masterpieces: The Metropolitan Museum of Art . . . . .	10
The Best of Bette Davis . . . . .	12
The Remarkable Music of 1350 to 1420 in Western Europe . . . . .	9
“Z.” A Film by Costa-Gavras . . . . .	13

### GOVERNMENT/POLITICS

Great Decisions . . . . .	11
Great Presidents: Lyndon Johnson . . . . .	12
Topics of Interest: Carl Steiner’s Perspectives . . . . .	6

### HEALTH/SCIENCE

Earthquakes, Diamonds, Meteorites: What They Tell Us about the Earth . . . . .	10
The “Algebra of Infinity” and Incompleteness . . . . .	7
The Atomic Chronicle . . . . .	10
The Role of Biotechnology in Future Medicines . . . . .	7
The Story of Light . . . . .	6

### HISTORY/RELIGION

200th Anniversary of the War of 1812 . . . . .	5
Bl. Pope John XXIII . . . . .	7
“Escape...the Bondage of the Past:” Part II . . . . .	5
Finishing the Fight in the Pacific . . . . .	6
History of Hollywood . . . . .	11
History of the American Revolution . . . . .	7
History Presentations by NOVA Faculty . . . . .	8
Is Forgiveness Possible? . . . . .	8
Looking for God in Scripture—An Evolving Understanding . . . . .	7
The RMS Titanic . . . . .	13
Trouble at the Border: The U.S. and Mexican Revolution, 1910-1920 . . . . .	12

**LITERATURE**

Poetry and You . . . . . 13

**PERSONAL DEVELOPMENT/CRAFTS**

Balancing Act . . . . . 9  
Identity Theft: How to Detect and Defend Against It . . . . . 8  
Knitting for Beginners and Others . . . . . 6  
Make a Tote Basket. . . . . 11  
Retirement Income: Charting a Course to Make Your Money Last . . . . . 5  
Staging Your Home for Sale . . . . . 10  
Tea Presentation & Tasting: Pairing Tea and Chocolates. . . . . 9  
Wine, the Types and Selection Of . . . . . 12

**SPECIAL INTEREST GROUPS**

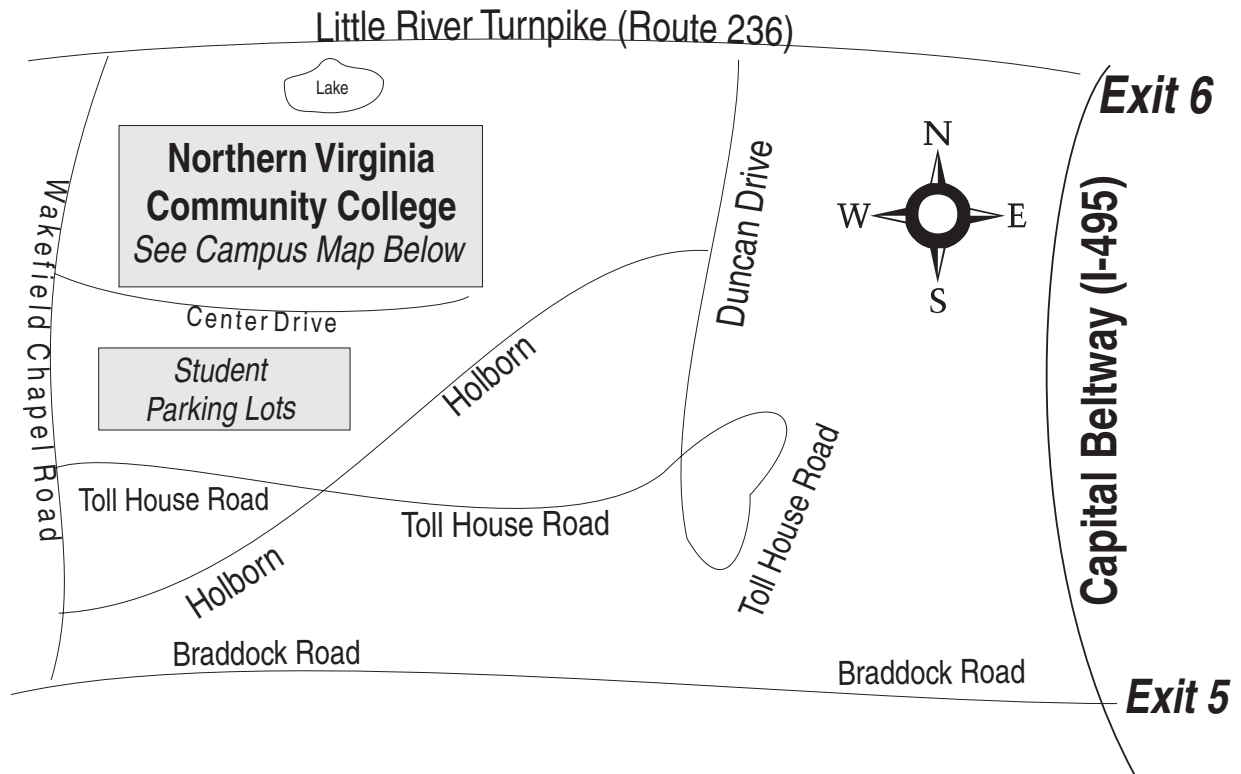
Arts and Smarts Group . . . . . 15  
Bridge Group . . . . . 15  
Community Theatre Group . . . . . 15  
Current Events Group . . . . . 15  
Favorite Books Club . . . . . 15  
French Conversationalists . . . . . 15  
Gourmand Group . . . . . 16  
    Bacchus Wine Tasting Subgroup . . . . . 16  
Nimble Fingers. . . . . 16  
Photography Group . . . . . 16  
Walkabouts Group . . . . . 16

**TRIPS/TOURS**

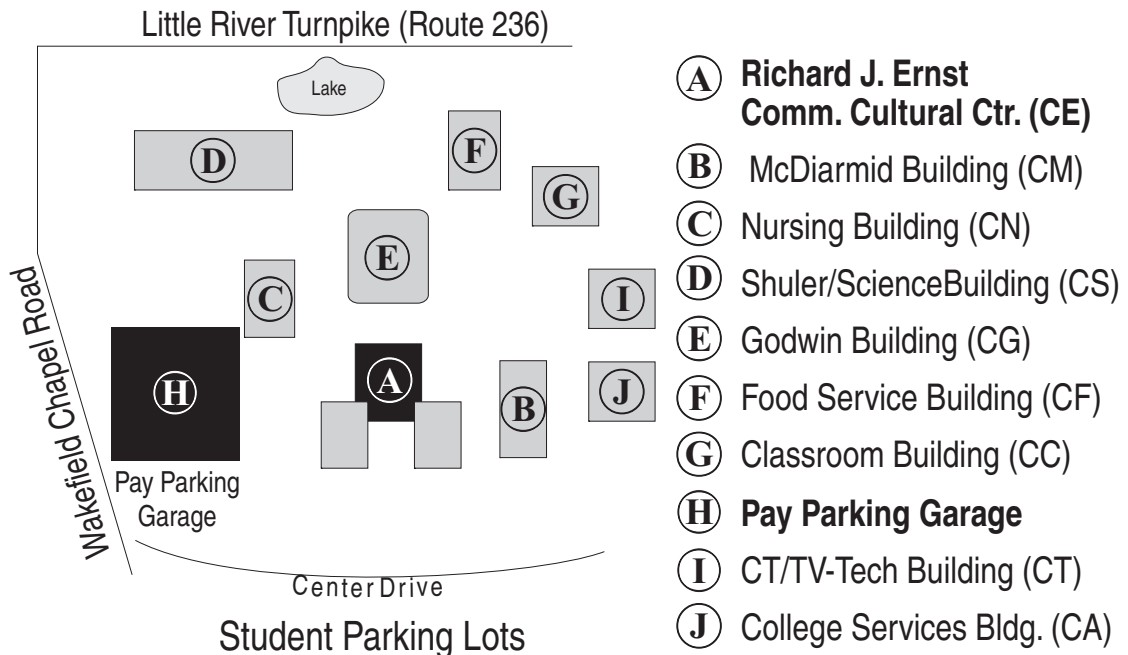
Cherry Hill Farm—Tea and Tour . . . . . 10  
Meadowlark Botanical Gardens: A Focus on Native Plants . . . . . 6  
Spring Wildflower Walk at Riverbend Park, VA . . . . . 13  
Study Travel: Spain and Portugal . . . . . 9  
The Nation Takes Root on Capitol Hill. . . . . 13

**Directions to Class Locations. . . . . 17**

# NOVA Campus Maps



## Annandale Campus Map



# LLI Winter/Spring Program 2012

**Note:** All programs are free to members unless otherwise specified. See full addresses of course locations starting on page 17.

**Members must register for the courses prior to attending because of space constraints. If you are unable to attend after registering, please contact the course coordinator so that anyone on the waiting list can be given the opportunity to attend the course.**

---

## LLI Forum and Open House

The "Forum" is a meeting that offers presentations by guest speakers on a variety of topics. It is open to both members and non-members. Following the presentations, brief announcements are usually made regarding LLI's activities. Light refreshments are available at 9:30 a.m. The meeting begins at 10:00 a.m. Refer to the LLI newsletter for details.

**Upcoming Forum dates are:** Wednesday, January 11, Wednesday, February 1, Tuesday, March 13, Wednesday, April 4, Wednesday, May 2, and Wednesday, June 6.

**Place:** Ernst Cultural Center (CE), NOVA Annandale Campus

---

## Lunch Bunch

LLI members and guests are invited to join fellow members for lunch following each Forum meeting. For the convenience of participants, a restaurant not too far from the NOVA Campus that offers quality food at moderate prices is selected each month. The lunch gives attendees a chance to meet and greet fellow LLI members. No advance reservation is necessary. A count of those planning to participate that day is taken at the Forum. Contact John Bogart at (703) 273-2547 or [bogartje@cox.net](mailto:bogartje@cox.net).

---

## Monday Mornings

---

### Course 12W01A Retirement Income: Charting a Course to Make Your Money Last (1 Session)

You've spent a lifetime accumulating money for retirement. You've saved, invested, and taken advantage of workplace retirement plans. Now you have to make decisions about how to generate a steady income stream and these decisions could have lasting repercussions: How will you manage your assets in retirement? Will your hard-earned money last a lifetime? Which assets should you spend first? What withdrawal decisions will work best? What investment alternatives can produce income?

**Date & Time:** Monday, January 23; 10:00 a.m.—11:30 a.m.

**Place:** St. Matthew's United Methodist Church (Room 304), Annandale

**Course Size:** Min. 10, Max. 40

**LLI Coordinator:** Gina Trapp (703) 522-7528; [GTrapp\\_26@msn.com](mailto:GTrapp_26@msn.com)

**Leader:**

**SAM EISEN**, BA, History, Ohio State University, MA in Industrial Relations, Loyola University in Chicago; has over 28 years of experience in financial planning and investment management; is a Certified Investment Management Analyst, Accredited Investment Fiduciary, Certified Financial Planner, and a Professional Plan Consultant; works with individuals and business owners to help them set a course toward wealth-related goals and provides

fiduciary and investment management services to corporate pension plans.

---

### Course 12W02A 200th Anniversary of the War of 1812 (1 Session)

The War of 1812 is a good example of a war with debated causes and a conclusion that left the causes unanswered. We will examine the different causes and historical interpretations of the war, the major military engagements and key personalities, as well as the long-range effects of the war.

**Date & Time:** Monday, January 30; 10:00 a.m.—11:30 a.m.

**Place:** Ernst Cultural Center (CE), Seminar Rooms B, C & D, NOVA Annandale Campus

**Course Size:** Min. 10, Max. 70

**LLI Coordinator:** Lorin Goodrich (703) 425-9574;

[lorin.goodrich@verizon.net](mailto:lorin.goodrich@verizon.net)

**Leader:**

**Dr. WALLACE HUTCHEON, JR.**, was head of the History Department at NOVA Annandale from 1974 until his retirement in 2008. He is now Professor Emeritus of History at Northern Virginia Community College. His book, *Robert Fulton: Pioneer of Undersea Warfare* (1981), stresses the role of Fulton's naval weapons in the War of 1812.

---

### Course 12W03A "Escape...the Bondage of the Past:" Part II (4 Sessions)

In his masterful—and controversial—1893 Frontier Thesis, Frederick Jackson Turner argued that the American frontier had opened "a gate of escape" for a new race of people. Rooted in Old World traditions but adapted to New World conditions, these Americans evinced a voracious appetite to conquer the frontier and called it Manifest Destiny. The Civil War delayed expansion but a reconstructed Union soon vigorously pursued it. The 1884-1901 period provides a ripe field for exploration as the States multiplied and Americans sought the next frontier beyond their own shores. Part One (Fall 2011) of this course focused on political, social, economic and other issues from 1884-1888; Part Two follows the same during the years 1889-1901.

**Dates & Time:** Mondays, February 27, March 12, 19, 26; 10:00 a.m.—11:30 a.m. (**Note: there is no class on March 5.**)

**Place:** Mason District Governmental Center (Main Community Room), Annandale

**Course Size:** Min. 25, Max. Unlimited

**LLI Coordinators:** Rick & Pat Daniels (703) 354-3792;

[rwdaniel@mindspring.com](mailto:rwdaniel@mindspring.com)

**Leader:**

**MICHAEL KELLY**, studied American History through undergraduate work at The Pennsylvania State University and seasonal employment with the National Park Service; currently

coordinates the National Mall and Memorial Parks interpretive outreach program and assists with ongoing park initiatives in partnership, cultural resource management, and interpretive media; prior NPS experience includes Eisenhower National Historic Site and Gettysburg National Military Park.

---

### Course 12W04A Knitting for Beginners and Others (6 Sessions)

Join one of LLI's favorite courses and review basic knitting stitches—knit, purl, cast on, increase, decrease, cast off, and yarn over. Knit simple objects or garments using these stitches. The instructor will contact each student prior to the first course regarding purchase of yarn and knitting needles. **Note:** Knitters of *all* skill levels are encouraged to participate. You don't need to be an expert. You can learn not only from the instructor but from each other!!

**Dates & Time:** Mondays, April 16, 23, 30, May 7, 14, 21; 10:00 a.m.—11:30 a.m.

**Place:** Little River United Church of Christ (Room 7), Annandale

**Course Size:** Min. 5, Max. 16

**LLI Coordinator:** Colletta Hammond (703) 866-6159; [mchammondh@aol.com](mailto:mchammondh@aol.com)

**Leader:**

**DIANE SONNENBERG**, graduate of Northern Virginia Community College; retired from Verizon; was taught to knit by her grandmother and has been knitting for over 30 years.

---

### Course 12W05A Meadowlark Botanical Gardens: A Focus on Native Plants (1 Session)

Meadowlark's new Korean Peace Bell has generated a lot of interest. Join Education Specialist Patricia Dietly to learn about the history of this majestic garden, and to see the latest features up close. We will also check on the progress of the blossoms on Meadowlark's 100+ Yoshino cherry trees. **Cost is \$1.50 per person, payable at the door.** Everyone is free to walk through the gardens after the tour. Meadowlark has a picnic area open to the public if anyone would like to bring a lunch.

**Date & Time:** Monday, June 4; 10:00 a.m.—11:30 a.m.

**Place:** Meadowlark Botanical Gardens, Vienna

**Course Size:** Min. 8, Max. 20

**LLI Coordinator:** Elaine Cherry (703) 560-4860; [elainecherry@cox.net](mailto:elainecherry@cox.net)

**Leader:**

**PATRICIA DIETLY**, is an experienced Field Biologist who specializes in native plants; works at Meadowlark Botanical Gardens where she is the lead educator; studied botany at Grove City College and attained certification to teach secondary science through Gannon University (both in Pennsylvania); has a background in environmental project consulting, as well as wetlands delineation; enjoys sharing her knowledge and love of plants with students of all ages.

## Monday Afternoon

---

### Course 12W06P Finishing the Fight in the Pacific (4 Sessions)

The first session is a quick look at communications security in the Pacific, including Halsey's "Dirty Trick Department" at work with an operational deception. The remaining three sessions will examine the efforts at the end of the war to get the Japanese to surrender, specifically examining the military situation, the plans for the Allied invasion of Japan, and the information war.

**Dates & Time:** Mondays, March 5, 12, 19, 26; 1:30 p.m.—3:30 p.m.  
(**Note course time.**)

**Place:** The Woodlands (Theater), Fairfax

**Course Size:** Min. 10, Max. 30

**LLI Coordinator:** Lorin Goodrich (703) 425-9574; [lorin.goodrich@verizon.net](mailto:lorin.goodrich@verizon.net)

**Leader:**

**KEITH YOUNG**, U.S. Naval Academy graduate; MBA, Old Dominion University; retired U.S. Navy Captain; has taught graduate level business courses at Averett University's Northern Virginia campus; made presentations on a variety of topics at the Osher Lifelong Learning Institute at George Mason University, Fairfax City Senior Center and the Arlington Learning in Retirement Institute.

## Tuesday Mornings

---

### Course 12W07A The Story of Light (1 Session)

From ancient times to the present, from philosophers and artists to quantum physicists, nothing has so perplexed, so fascinated, so captivated the mind as the elusive nature of light. In this course, we'll take a journey into history, tracing how humans have endeavored to understand and harness the phenomenon of light.

**Date & Time:** Tuesday, March 27; 10:00 a.m.—11:30 a.m.

**Place:** Ernst Cultural Center (CE), Seminar Rooms B, C & D, NOVA Annandale Campus

**Course Size:** Min. 15, Max. 70

**LLI Coordinator:** Doug Johnson (703) 628-3115; [lj\\_dj3@yahoo.com](mailto:lj_dj3@yahoo.com)

**Leader:**

**MARK RUBINSTEIN**, retired Solid State Physicist who currently teaches Physics at the NOVA Woodbridge Campus.

---

### Course 12W08A Topics of Interest: Carl Steiner's Perspectives (4 Sessions)

*April 3* Our National Debt: A Second Look

*April 10* Health Care Revisited

*April 17* Class Warfare in Our Time?

*April 24* Islam and the West: An Overview

**Dates & Time:** Tuesdays, April 3, 10, 17, 24; 10:00 a.m.—11:30 a.m.

**Place:** St. Matthew's United Methodist Church (Room 304), Annandale

**Course Size:** Min. 10, Max. 30

**LLI Coordinator:** Dottie Kilgore (703) 865-6580; [dottierk@cox.net](mailto:dottierk@cox.net)

**Leader:**

**Dr. CARL STEINER**, PhD, Professor Emeritus, George Washington University; pursues studies in many areas of knowledge and gives lectures on his findings.

## Tuesday Afternoons

### Course 12W09P History of the American Revolution (9 Sessions)

This course will examine the causes of the American Revolution, the men who brought it about, the Declaration of Independence, the course of the war, and the founding of the Republic with emphasis on public sentiment for these various momentous acts. (Note: This course is a follow-up to American Colonial History given during the Fall 2011 semester; the Fall course is NOT a prerequisite for this course. This is also a repeat of the American History course given during the Winter/Spring 2009 semester.)

**Dates & Time:** Tuesdays, February 7, 14, 21, 28, March 6, 13, 20, 27, April 3; 1:30 p.m.—3:00 p.m.

**Place:** Little River United Church of Christ (Room 8), Annandale

**Course Size:** Min. 12, Max. 25

**LLI Coordinator:** Peggie Bogstie (703) 451-2676;  
peggie728@verizon.net

**Leader:**

**BURT GREENSTEIN**, BA, MA, History, Geography, Languages, University of Buffalo. Taught English History and European Governments; worked in the Department of the Air Force and the Defense Intelligence Agency.

### Course 12W10P The “Algebra of Infinity” and Incompleteness (2 Sessions)

Georg Cantor (1845-1918) clinched the forbidden mathematics of infinity, succeeding where others had failed for centuries but likewise going insane from the effort. His Continuum Hypothesis (still the greatest unsolved mathematical question) staged the work of Time’s Mathematician of the Century, the logician Kurt Gödel (1906-1978) who was Einstein’s best friend. Gödel’s two *Incompleteness Theorems* were the 20th century’s greatest because these tell us what is “knowable.” Here we briefly survey Cantor’s work and then that of Gödel (whose Theory of Relativity mathematically proved the existence of wormholes, strange objects that permit time travel; everyone laughed at this except for the only one who counted—Einstein himself).

**Dates & Time:** Tuesdays, April 24, May 1; 1:30 p.m.—3:00 p.m.

**Place:** Ernst Cultural Center (CE), Seminar Rooms B, C & D, NOVA Annandale Campus

**Course Size:** Min. 10, Max. 70

**LLI Coordinator:** Lorin Goodrich (703) 425-9574;  
lorin.goodrich@verizon.net

**Leader:**

**Dr. BRUCE COLLETTI**, Adjunct Professor of Mathematics, NOVA Alexandria Campus, and of Operations Research at Florida Institute of Technology; retired Air Force Officer and career Operations Research Analyst; his NOVA course in Discrete Mathematics includes lectures about Cantor’s and Gödel’s theories.

### Course 12W11P BI. Pope John XXIII (1 Session)

Angelo Roncalli (1881-1963) was the peasant boy turned Pope John XXIII (r. 1958-1963), the “most beloved Pope in history” who launched Vatican II, the 20th Century’s great Church Council (1962-1965).

Asked how many people worked in the Vatican, he said “about half.” We’ll sketch a life whose “career trajectory” had been Priest, Army Sergeant, History Professor and friendly Diplomat (who warmed de Gaulle’s cold heart but irritated Pius XII). In 1963, President Johnson posthumously awarded John XXIII the Presidential Medal of Freedom for helping to defuse the Cuban Missile Crisis (Fall 1962).

**Date & Time:** Tuesday, May 8; 1:30 p.m.—3:00 p.m.

**Place:** Ernst Cultural Center (CE), Seminar Rooms B, C & D, NOVA Annandale Campus

**Course Size:** Min. 10, Max. 70

**LLI Coordinator:** Lorin Goodrich (703) 425-9574;  
lorin.goodrich@verizon.net

**Leader:**

**Dr. BRUCE COLLETTI** (see Course 12W10P for bio information.)

## Wednesday Mornings

### Course 12W12A The Role of Biotechnology in Future Medicines (1 Session)

We will discuss the policies and modern technologies being used to develop personalized medical treatment for common and debilitating diseases such as cancer, autoimmune diseases, including rheumatoid arthritis and Crohn’s disease, and neurological diseases such as Alzheimer’s and Parkinson’s disease. These modern “biologic” medicines differ from more standard drug treatments and require new and different healthcare policies. U.S. and international healthcare systems are adopting new measures to address “biologic” medicines and their intended copies—called “biosimilars.” One of these measures is the Biologics Price Competition and Innovation Act of 2009 recently passed by the U.S. This law maintains incentives for producers of new innovative biologics while promoting the introduction of lower-cost biosimilars and still maintaining safe and effective medicines for patients.

**Date & Time:** Wednesday, March 14; 10:00 a.m.—11:30 a.m.

**Place:** Ernst Cultural Center (CE), Seminar Rooms B, C & D, NOVA Annandale Campus

**Course Size:** Min. 15, Max. 70

**LLI Coordinator:** Peter Schwarzkopf (703) 998-0769;  
pschwarzkopf@verizon.net

**Leader:**

**KAREN HAUDA**, BS in Biochemistry and Molecular Biology; MS in Immunology, University of Wisconsin-Madison; JD, Catholic University of America; Senior Director of Biotherapeutics Strategic Initiatives, Abbott Laboratories; also served as Attorney-Advisor at the U.S. Patent and Trademark Office and Senior Director of the Office of the U.S. Trade Representative, where she negotiated bilateral and multilateral intellectual property agreements for the United States.

### Course 12W13A Looking for God in Scripture—An Evolving Understanding (4 Sessions)

The Scriptures, both Hebrew and Christian, show a development of the understanding of God and His revelation through many cultures, environments and generations; from texts that reveal God in nature through personal encounters; between God and His

people at Sinai; to Jesus as a revelation of the Father. We will look at those who have tried to understand this development from both a Jewish and Christian perspective.

**Dates & Time:** Wednesdays, March 21, 28, April 4, 18; 10:00 a.m.—11:30 a.m. (**Note: there is no class on April 11.**)

**Place:** Greenspring Village, Village Square Theater, Springfield

**Class Size:** Unlimited

**LLI Coordinator:** Ellen Gale (703) 569-3370

**Leader:**

**JOHN RYBICKI**, BS, Clarkson College of Technology; MA, University of Arkansas; MS, George Washington University; diplomas in Theological Studies, Virginia Theological Seminary and Antiochian Orthodox Church; studied at St. George's College, Jerusalem. Serves as Pastoral Associate at Riderwood Retirement Community.

---

**Course 12W14A Identity Theft: How to Detect and Defend Against It (4 Sessions)**

For the 11th consecutive year, identity theft has topped all other consumer complaints filed with the Federal Trade Commission. We will explore all aspects of identity theft and provide tools so you know how to detect and defend against the fastest growing crime in America.

**March 28** *ID Theft and How to Minimize Your Risk.* Are you a target for identity theft? Evaluate the things you do as part of your daily routine and learn what you can do to minimize your risk for identity theft.

**April 11** *Identity Theft and Financial Crimes in Fairfax County.* An Investigator from the Financial Crimes Section of the Fairfax County Police Department will provide an overview of identity theft and other financial crimes committed in Fairfax County.

**April 18** *Credit Reports and How to Defend Against Identity Theft.* We'll review credit reports and show how they can be used to defend against identity theft and other fraud. Information will also be provided on how to dispute credit report errors.

**April 25** *How to Cope With and Recover From Identity Theft.* We'll review laws and resources so you can develop a plan of action to limit the extent of damage to your financial resources and reputation if identity theft strikes.

**Dates & Time:** Wednesdays, March 28, April 11, 18, 25; 10:00 a.m.—11:30 a.m. **Note: There is no class on Wednesday, April 4.**

**Place:** St. Matthew's United Methodist Church (Room 304), Annandale

**Course Size:** Min. 20, Max. 40

**LLI Coordinator:** Ed McKnight (703) 425-6224; [edjem@aol.com](mailto:edjem@aol.com)

**Leader:**

**VEE JOHNSON**, Community Outreach Liaison with the Consumer Affairs Branch of the Fairfax County Department of Cable and Consumer Services; has been a consumer advocate and a resource for information for the Fairfax County community since 1987.

## Wednesday Afternoons

---

**Course 12W15P History Presentations by NOVA Faculty (7 Sessions)**

Members of the History faculty from various NOVA Campuses will continue their annual informative presentations.

**Feb. 8** World War II Home Front—Propaganda and Stereotypes (Prof. John Schmitz)

**Feb. 15** Japanese Internment during WW II—Denial of Civil Rights and Fracturing of Family Structure (Prof. Margaret Reed)

**Feb. 22** AIDS Epidemic—Origins and Early Beliefs (Prof. Susan G. Thompson)

**Feb. 29** Politics of the 1840's—Presidencies of William Henry Harrison, John Tyler & James Polk (Prof. Thomas Cogliano)

**Mar. 14** Women's Suffrage (Prof. Mary Zimmerman)

**Mar. 21** Autocracy—the Anchor of Russian History (Muscovite & Romanov Eras) (Dr. William Kinsella)

**Mar. 28** Disappearance of the Ancient Civilization 'Sumer' (Prof. Mary Zimmerman)

**Dates & Time:** Wednesdays, February 8, 15, 22, 29, March 14, 21, 28; 1:30 p.m.—3:00 p.m.

**Place:** Ernst Cultural Center (CE), Seminar Rooms B, C & D, NOVA Annandale Campus

**Course Size:** Min. 10, Max. 70

**LLI Coordinator:** Lorin Goodrich (703) 425-9574;

[lorin.goodrich@verizon.net](mailto:lorin.goodrich@verizon.net)

**Faculty Coordinator:** Dr. William Kinsella

**Leaders:**

**Dr. WILLIAM KINSELLA**, BA, MA, John Carroll University; PhD, University of North Carolina

**Prof. THOMAS COGLIANO**, BS, University of Mary Washington; MA, George Mason University

**Prof. JOHN SCHMITZ**, BA, University of North Carolina, Chapel Hill; MA, North Carolina State University; MDV, Virginia Theological Seminary; PhD, American University

**Prof. MARY ZIMMERMAN**, BA, Carleton College; MA, Vanderbilt University

**Prof. MARGARET REED**, AA, AS, NVCC; BA, MA, George Washington University

**Prof. SUSAN G. THOMPSON**, BA, Ursuline College; MA, Kent State University

---

**Course 12W16P Is Forgiveness Possible? (2 Sessions)**

This course will focus on conflicting messages from the biblical texts of Jonah and Jeremiah.

**Dates & Time:** Wednesdays, February 29, March 7; 2:30 p.m.—4:00 p.m. (**Note course time.**)

**Place:** Greenspring Village, Village Square Theater, Springfield

**Class Size:** Unlimited

**LLI Coordinator:** Ellen Gale (703) 569-3370

**Leader:**

**Rabbi BRUCE AFT**, spiritual leader at Adat Reyim Synagogue since 1991; graduate of Reconstructionist Rabbinical College, Philadelphia. Worked with March of the Living since 1992, B'nai Brith Youth Organization since 1985. Involved in teen dialogue groups at George Mason University's Institute for Conflict Analysis and Resolution.

---

**Course 12W17P A History of Impressionism, Part III**  
(3 Sessions)

This is a continuation of the course given during the Summer and Fall 2011 semesters. These DVD lectures by Professor Richard Brettell, Professor of Art and Restoration at the University of Texas at Dallas, will include the 3rd Exhibition and Edgar Degas; Gustave Caillebotte and Mary Cassatt; and Manet's Later Life and Departures. There will be time for questions and discussion after each lecture segment.

**Dates & Time:** Wednesdays, March 7, 14, 21; 1:30 p.m.—3:00 p.m.

**Place:** James Lee Community Center (Room 111), Falls Church

**Course Size:** Min. 15, Max. 40

**LLI Coordinator:** Nancy Jerdan (703) 455-2699;  
*njerdanva@verizon.net*

**Leader:**

**DOUG JOHNSON**, has been an active member of LLI since joining in 2004; served on the Board of Directors for three years; along with fellow member Donna Trogler, established the Arts & Smarts Special Interest Group in order to have docent led tours of the D.C. Museums; is a retired Financial Advisor; loves to travel and is passionate about visiting museums.

---

**Course 12W18P Study Travel: Spain and Portugal**  
(3 Sessions)

This Study Travel course is being given in preparation for our May 2012 trip. We will view a Rick Steves' travelogue on Spain, and hope to engage someone to teach us "Tourist Spanish." In addition, we are working on a visit to an embassy to learn about the history and culture of Spain and Portugal. **Note: You do not have to be signed up for the May 2012 trip to take this course. However, priority in this course will be given to those who are taking the trip.**

**Dates & Time:** Wednesdays, April 4, 11, 18; 1:30 p.m.—3:00 p.m.

**Place:** James Lee Community Center (Room 111), Falls Church

**Course Size:** Min. 15, Max. 40

**LLI Coordinator:** Terry Brittain (703) 425-8240; *terry\_brittain@cox.net*

**Leader:**

**DOUG JOHNSON** (see **Course 12W17P** for bio information.)

---

**Course 12W19P Balancing Act (6 Sessions)**

This course will cover training in balance, posture, strength and endurance, flexibility, and gait. Our goal is for better balance and a better you! **Note: This course involves light exercise. Attendees should dress comfortably. This is a repeat of the course given during the Winter/Spring 2011 semester.**

**Dates & Time:** Wednesdays, April 4, 11, 18, 25, May 2, 9; 11:30 a.m.—1:00 p.m. (**Note course time. Also note that April 4 and May 2 are Forum dates; however, since this course is being held across the street from NOVA, participants should be able to attend both.**)

**Place:** Little River United Church of Christ (Social Hall), Annandale

**Course Size:** Min. 6, Max. 12

**LLI Coordinator:** Trudy Hynes (703) 644-0672; *tchynes@mac.com*  
**Leader:**

**Dr. SUSAN P. THOMPSON**, BS, West Virginia University; MS, PhD, George Mason University. Faculty member, Physical Education Department, NOVA Annandale Campus. She has been working in the field of Exercise Science and Gerontology since 1983; directed the Higher Education Program at George Mason University.

---

**Course 12W20P The Remarkable Music of 1350 to 1420 in Western Europe (1 Session)**

Dr. John Guillory, retired Director of Musica Antiqua and the Duke of Berry Ensemble, will present a "show, play and tell" of the surprising musical developments in France, Cyprus, Italy and England during this short period of history, including the music supported in the avant-garde "Arts Subtilior" movement. His multi-media presentation will include recordings of some of this interesting, complex, rarely-performed music, and a few pictures of the colorful music manuscripts, musical instruments and their court environments, with explanatory comments.

**Date & Time:** Wednesday, June 13; 1:30 p.m.—3:20 p.m. (**Note course time.**)

**Place:** St. Matthew's United Methodist Church (Room 304), Annandale

**Course Size:** Min. 12, Max. 40

**LLI Coordinator:** Peter Schwarzkopf (703) 998-0769;  
*pschwarzkopf@verizon.net*

**Leader:**

**Dr. JOHN GUILLORY**, BA, Rice University; PhD in Theoretical Physics, University of California, Berkeley; retired Professor, George Mason University School of Computational Sciences; retired Director, Musica Antiqua; known both as a Scientist and as a Musicologist, including researching, performing and directing pre-baroque music, and composing; has made numerous recordings and written many articles in both fields.

---

## Thursday Mornings

---

**Course 12W21A Tea Presentation & Tasting: Pairing Tea and Chocolates (1 Session)**

**Cost:** \$20. Enclose a check made payable to Great Falls Tea Garden with your registration. Learn about the main growing regions and botanical aspects of the tea plant and the cacao tree and how they were first introduced into America. Taste diverse teas and styles of chocolate and learn how to pair these two delectable treats. Just in time for Valentine's Day!

**Date & Time:** Thursday, February 9; 10:30 a.m.—12:30 p.m. (**Note course time.**)

**Place:** Great Falls, VA (**Directions will be provided to those who register for the course.**)

**Course Size:** Min. 10, Max. 20

**LLI Coordinator:** Gina Trapp (703) 522-7528; *GTrapp\_26@msn.com*

**Leader:**

**Laurie Bell**, Chef and Certified Tea Specialist. Très bien Grand Diplôme from Le Cordon Bleu in Paris. Culinary career spanning 25 years; founded À La Belle Cuisine, teaching cooking courses focused on French technique; also developed a catering business. Has been cooking with and studying about tea for many years. Writes freelance and for the American Institute of Wine and Food newsletter. She serves on the local Chapter Board of AIWF,

the Advisory Board of Stratford University's School of Culinary Arts, and Friends of Colvin Run Mill. She also coordinates local educational and networking events for Women Chefs and Restaurateurs.

---

**Course 12W22A Staging Your Home for Sale**  
(1 Session)

This course will provide you with information on how to prepare your home to sell in today's real estate market. It includes tips to make your home appeal to the broadest market for the most money!

**Note:** This is a repeat of the course given during the Winter/Spring 2011 semester. Please re-register if you would like to attend. Priority will be given to those on the waiting list.

**Date & Time:** Thursday, February 16; 10:00 a.m.—11:30 a.m.

**Place:** Ernst Cultural Center (CE), Seminar Rooms C & D, NOVA Annandale Campus

**Class Size:** Min. 10, Max. 30

**LLI Coordinator:** Gina Trapp (703) 522-7528; [GTrapp\\_26@msn.com](mailto:GTrapp_26@msn.com)

**Leader:**

**NICKIE MYERS**, retired Schoolteacher and School Administrator who has pursued her avocation of decorating. Trained with the Interior Arrangement and Design Association and started her own business helping homeowners appreciate their furnishings by artfully rearranging them. Also works with homeowners and realtors downsizing and staging homes for sale.

---

**Course 12W23A Earthquakes, Diamonds, Meteorites: What They Tell Us about the Earth** (1 Session)

We will look at how geoscientists use earthquakes, diamonds, and meteorites to make assumptions about the nature and composition of the earth's interior. Despite Jules Verne's claim, we have only been able to sample the very surface of our planet, so that all the models of the earth are developed by inference, using our knowledge of the actions of earthquakes, the origin of diamonds, and the nature of meteorites. We will tie these inferences to speculation about the earth's origin, development, and even its future.

**Date & Time:** Thursday, March 15; 10:00 a.m.—11:30 a.m.

**Place:** Ernst Cultural Center (CE), Seminar Rooms B, C & D, NOVA Annandale Campus

**Course Size:** Min. 10, Max. 70

**LLI Coordinator:** Ed McKnight (703) 425-6224; [edjem@aol.com](mailto:edjem@aol.com)

**Leader:**

**Dr. BARRY CENTINI**, PhD, University of North Carolina at Chapel Hill. Taught Geology at Emory University; directed Computer Based Distance Learning Programs and worked on computer learning issues with the U.S. Army. Retired as a Senior Research Engineer for SRI International in 2004.

---

**Course 12W24A The Atomic Chronicle** (4 Sessions)

These sessions will cover:

**Building the Bomb:** The how, where and when the atomic bomb was built.

**Testing the Bomb:** The story of Operation Trinity—how and why the bombs were tested before their military use.

**Delivering the Bomb:** Explaining how the bombs were targeted, delivered and the results of each bomb blast.

**Operation Crossroads:** After the war the U.S. conducted the *Bikini Atomic Bomb Tests* to learn more about blast and radiation effects and how they might be countered.

**Dates & Time:** Thursdays, April 19, 26, May 3, 10; 10:00 a.m.—12:00 p.m. (Note course time.)

**Place:** The Woodlands (Theater), Fairfax

**Course Size:** Min. 10, Max. 30

**LLI Coordinator:** Lorin Goodrich (703) 425-9574;

[lorin.goodrich@verizon.net](mailto:lorin.goodrich@verizon.net)

**Leader:**

**KEITH YOUNG** (see Course 12W06P for bio information.)

---

**Course 12W25A Museum Masterpieces: The Metropolitan Museum of Art** (3 Sessions)

This is a continuation of the course given during the Fall 2011 semester; attendance at the Fall course is not a prerequisite for this course. In these Great Courses lectures, Yale-educated Art Professor Richard Brettell covers European painting from the Renaissance through the 19th century, along with drawings and prints, photographs, and European Decorative Arts. Although no prior reading is necessary, Thomas Hoving, the Director of the Met during the momentous 1970's, has written several books that will entertain and inform you: *False Impressions*, *Dancing with Mummies*, and *King of the Confessors*. **Note: Lunch may be purchased (cash or credit card) in the Bistro at Goodwin House. Allow about 1 hour for lunch. Please advise your Course Coordinator if you plan on eating lunch in the Bistro so that the Coordinator can notify Goodwin House ahead of time.**

**Dates & Time:** Thursdays, April 12, 19, 26; 10:00 a.m.—11:30 a.m.

**Place:** Goodwin House (Auditorium), Falls Church

**Course Size:** Min. 10, Max. 40

**LLI Coordinator:** Linda LeDuc (703) 578-1178; [la15040@aol.com](mailto:la15040@aol.com)

**Leader:**

**MARCIA TOEPFER**, PhD in American Diplomatic History, University of Virginia; her studies included Soviet, Russian, and Middle European History; retired Intelligence Analyst; has led courses for LLI on the films "*Dr. Zhivago*" and "*The Music Box*."

---

**Course 12W26A Cherry Hill Farm—Tea and Tour**  
(1 Session)

**Cost: \$26.** Enclose a check payable to "Cherry Hill Farm" with your registration. Cherry Hill Farm, located in Falls Church, consists of the original circa 1845 Greek Revival farmhouse and outbuildings. The house has been fully restored and furnished in a mid-19th century style and offers a glimpse into the life and times of a prosperous farming family at that time in Virginia. The Blaisdell family purchased Cherry Hill in 1856 and successfully farmed the 73-acre tract through the difficult years of the Civil War. A costumed docent will host the tea and give an entertaining talk in the parlor before ushering guests into the lovely dining room for a full tea consisting of sandwiches, assorted sweets, warm scones and a bottomless cup of tea. A tour of the farmhouse is included. **Note: This is a repeat of the tea/tour given during the Fall 2011 semester. Please re-register if you would like to attend. Priority will be given to those on the waiting list.**

**Date & Time:** Thursday, April 26; 11:00 a.m.—1:00 p.m. (Note course time.)

**Place:** Cherry Hill Farm, Falls Church

**Course Size:** Min. 12, Max. 18

**LLI Coordinator:** Gina Trapp (703) 522-7528; [GTrapp\\_26@msn.com](mailto:GTrapp_26@msn.com)

**Leader:**

**DIANE MORSE**, arranges and manages events at Cherry Hill Farm in Falls Church, VA.

### Course 12W27A History of Hollywood (4 Sessions)

Thomas Edison did not believe moving pictures had much of a future. The early flickering images of fan dancers, sneezers and speeding locomotives gradually evolved into continuous images with plotlines, scripts, and professional actors hoping to become internationally famous and idolized, a select few actually succeeding. Newly-arrived immigrants saw their employment options limited, but found plenty of opportunities in the burgeoning movie industry when few others wanted to be associated with this “low” art form. So they created their own industry and an American culture. Emerging from factory buildings in New Jersey before moving to a dusty orange grove in California named Hollywood, today’s billion-dollar industry has come a long way from its inauspicious beginnings, and has proven Edison very, very wrong.

**Dates & Time:** Thursdays, May 3, 10, 24, 31; 10:00 a.m.—11:30 a.m.

**Place:** Mason District Governmental Center, Annandale (Note: the May 3, 24, and 31 classes will meet in the Main Community Room. The May 10 class will meet in the Large Conference Room. There is no class on May 17.)

**Course Size:** Min. 25, Max. Unlimited

**LLI Coordinators:** Rick & Pat Daniels (703) 354-3792;

[rwdaniel@mindspring.com](mailto:rwdaniel@mindspring.com)

**Leader:**

**HEIDI DIETZE**, spent most of her childhood traveling, visiting sites from the Santa Fe Trail to the Corn Palace; developed an interest in history that led to an undergraduate degree in Holocaust Studies and a graduate degree in Film History; came to the National Mall and Memorial Parks in Washington, D.C., as a Park Ranger in 2002 following two years of service at the U.S. Holocaust Memorial Museum.

## Thursday Afternoons

### Course 12W28P Great Decisions (8 Sessions)

**Cost: \$20.** Enclose a check payable to LLI/NOVA with your registration. Join an in-depth discussion of eight major foreign policy issues facing the United States in 2011-12. Each session addresses one of these issues in accordance with a briefing book of short articles prepared by the Foreign Policy Association. Sessions will begin with a 30-minute video followed by a one-hour discussion.

**February 9** Middle East Realignment

**February 16** Promoting Democracy

**February 23** Mexico

**March 1** Cybersecurity

**March 8** Exit from Afghanistan & Iraq

**March 15** State of the Oceans

**March 22** Indonesia

**March 29** Energy Geopolitics

**Dates & Time:** Thursdays, February 9, 16, 23, March 1, 8, 15, 22, 29; 1:30 p.m.—3:00 p.m.

**Place:** St. Matthew’s United Methodist Church (Room 304), Annandale

**Course Size:** Min. 20, Max. 40

**LLI Coordinator/Leader:** Peter Schwarzkopf (703) 998-0769;

[pschwarzkopf@verizon.net](mailto:pschwarzkopf@verizon.net)

**PETER SCHWARZKOPF**, BA, Dartmouth College; JD, LLM in International Law, Harvard Law School; retired in 2007 from the Department of Transportation where he engaged primarily in international negotiations for commercial airline landing rights with numerous foreign countries; has led discussions for several courses at LLI.

### Course 12W29P How to Listen to and Understand Opera (4 Sessions)

This course is designed as a methodology, a guide to listening to and understanding opera. The listener will come to appreciate how music has the power to reveal truths beyond the spoken word; and how opera is a unique marriage of words and music in which the whole is far greater than its parts. We learn how operatic style and form have changed continuously throughout the history of European music, as they were influenced by political, social and cultural developments, and how different national languages and cultures have shaped their own types of opera and operatic style.

**Dates & Time:** Thursdays, April 5, 12, 19, 26; 1:00 p.m.—3:00 p.m.

(Note course time.)

**Place:** Greenspring Village (Village Square Theater), Springfield

**Course Size:** Min. 15, Max. Unlimited

**LLI Coordinator:** Deanna DeMember (703) 866-0907;

[ddemember@gmail.com](mailto:ddemember@gmail.com)

**Leader:**

**FERNE BEYER**, degree in Elementary Education, Hofstra University; studied voice in New York City for 10 years; has sung over 40 works of the oratorio with various choruses; wide knowledge of and has sung many great works of *Lieder* and French *mélodie*, plus other art songs.

### Course 12W30P Make a Tote Basket (3 Sessions)

**Materials Fee: \$17.** Enclose a check made payable to Louise Souk with your registration. This charming little tote basket is 14" long, 10" wide, and 5" high. It has a filled bottom and a flat “D” handle that is 10" high. This basket can carry all kinds of things—use your imagination and put it to good use. New colors will be available for your special basket. Have fun creating this new treasure!

**Dates & Time:** Thursdays, April 12, 19, 26; 11:30 a.m.—3:30 p.m.

(Note course time.)

**Place:** The Woodlands (Craft Room), Fairfax

**Course Size:** Min. 4, Max. 10

**LLI Coordinator:** Louise Blakely (703) 451-2084;

[blakelylk@yahoo.com](mailto:blakelylk@yahoo.com)

**Leaders:** Louise Souk (703) 323-9144 and Edward Mark (703) 323-9144; [louisesouk@verizon.net](mailto:louisesouk@verizon.net)

**LOUISE SOUSK**, retired public school teacher; contributing member of LLI since the steering committee formed; served on the Board of Directors for four years; planned and led day and overnight trips for LLI members for over 10 years; organized a

Charter Elderhostel for LLI; regularly teaches an LLI basket course.

**EDWARD MARK**, retired Federal Government Public Utilities Attorney. Makes and sells baskets; specializes in Nantucket baskets; regularly teaches LLI basket courses.

---

**Course 12W31P The Best of Bette Davis (5 Sessions)**

Bette Davis has a place in American films that will never be surpassed, and probably never equaled. Her earliest competition was Lillian Gish, who exerted a similar power over silent films. Her contemporary competition is Meryl Streep, who said she decided to become an actress after watching Davis on afternoon movies. We will investigate five films from different phases of Ms. Davis' career. If students are interested, we may see another selection next Summer.

**Note: Lunch may be purchased (cash or credit card) in the Bistro at Goodwin House. Allow about 1 hour for lunch. Please advise your Course Coordinator if you plan on eating lunch in the Bistro so that the Coordinator can notify Goodwin House ahead of time.**

*Apr. 12* "Of Human Bondage" (1935) with Leslie Howard

*Apr. 19* "All This and Heaven Too" (1940) with Charles Boyer

*Apr. 26* "The Little Foxes" (1941) with Herbert Marshall, Theresa Wright

*May 3* "All About Eve" (1950) with Gary Merrill, Anne Baxter

*May 10* "The Whales of August" (1987) with Lillian Gish, Vincent Price

**Dates & Time:** Thursdays, April 12, 19, 26, May 3, 10; 1:30 p.m.—3:00 p.m.

**Place:** Goodwin House (Auditorium), Falls Church

**Course Size:** Min. 10, Max. 40

**LLI Coordinator:** Gina Trapp (703) 522-7528; [GTrapp\\_26@msn.com](mailto:GTrapp_26@msn.com)

**Leader:**

**BETTY TOEPFER**, majored in English Literature at the City College of New York where she graduated Phi Beta Kappa; went on to do graduate work in English Literature at the State University of New York at Buffalo; her almost finished dissertation was a psychoanalytic study of *Wuthering Heights*; after spending 10 years in market research, she went to the Cardozo School of Law; retired from the Federal Energy Regulatory Commission as an Attorney; studied film as both an undergraduate and a graduate student; her loves have always been literature, art and film, and travel.

---

**Course 12W32P Wine, the Types and Selection Of (3 Sessions)**

Our first Great Courses video will introduce the range and characteristics of red and white varietal wines (for those who attended *Course 11W22P*, this will be a review.) The second will address the making and kinds of wines from Italy, and the third will provide advice on both becoming a knowledgeable wine buyer and the selection of wine for any occasion and any food. In each session, time will be provided for discussion.

**Dates & Time:** Thursdays, May 24, 31, June 7; 1:30 p.m.—3:00 p.m.

**Place:** The Virginian (Assembly Room), Fairfax

**Course Size:** Min. 10, Max. Unlimited

**LLI Coordinator:** Mary Underwood (703) 329-8391;

[maryunderwood29@verizon.net](mailto:maryunderwood29@verizon.net)

**Leader:**

**DICK DIBUONO**, a Civil Engineer, served as a Water Resources Development and Management expert for almost 50 years, 34 with the Army Corps of Engineers, 5 with the California Department of Water Resources, and the rest in private practice. An oenophile by heritage, Dick served on LLI's Board of Directors for seven years, two of them as president. He professes not to be an expert on wine making nor about all varieties and vineyards, but rather one who has long enjoyed the pleasant benefits of a glass with dinner.

---

## Friday Mornings

---

**Course 12W33A Trouble at the Border: The U.S. and Mexican Revolution, 1910-1920 (3 Sessions)**

We will examine the relationship and perceptions on both sides of the troubled U.S./Mexico border during the Mexican Revolution, 1910-1920. The lecture and discussion will cover such controversial matters as the U.S. intervention in Vera Cruz as this country pursued Pancho Villa after his attack on Columbus, New Mexico; German involvement in 1917; and the "Zimmerman Telegram." Watch Professor Anderson's website at [www.nosrednam.com](http://www.nosrednam.com) for details.

**Dates & Time:** Fridays, February 10, 17, 24; 10:00 a.m.—11:30 a.m.

**Place:** Annandale United Methodist Church (Room 300)

**Course Size:** Min. 15, Max. 30

**LLI Coordinator:** Lorin Goodrich (703) 425-9574;

[lorin.goodrich@verizon.net](mailto:lorin.goodrich@verizon.net)

**Leader:**

**Prof. MICHAEL ANDERSON**, BA, University of Illinois; MA, PhD, University of Chicago; Adjunct Professor at NOVA Alexandria Campus, George Mason University, and U.S. Coast Guard Academy; retired from the State Department's Foreign Service, where he reported on political developments in Poland and Italy; served in Islamabad.

---

**Course 12W34A Great Presidents: Lyndon Johnson (2 Sessions)**

Lyndon Johnson, one of the most activist Presidents in history, completed the formation of 20th century liberalism and left behind a legacy of grand achievement and tragic failure. In each session, we will view two 30-minute DVD's from the Great Presidents series, followed by 30 minutes of discussion. The four lectures to be presented and discussed are:

Lyndon Johnson—Politician in the Rough

Lyndon Johnson—Professional Politician

Lyndon Johnson—Building the Great Society

Lyndon Johnson—Acrimony at Home and Abroad

**Dates & Time:** Fridays, March 23, 30; 10:00 a.m.—11:30 a.m.

**Place:** Mason District Governmental Center (Main Community Room), Annandale

**Course Size:** Min. 10, Max. 70

**LLI Coordinator:** Peter Schwarzkopf (703) 998-0769;

[pschwarzkopf@verizon.net](mailto:pschwarzkopf@verizon.net)

**Leader:**

**CHUCK HULICK**, BS in Economics, Wharton School, University of Pennsylvania; MBA in Finance, Kogod School of Business, American University; worked as a Senior Consultant with the National Academy of Public Administration following a career in federal acquisition with the General Services Administration.

---

**Course 12W35A The RMS Titanic (1 Session)**

The mysteries of the Titanic have intrigued many for almost 100 years. On April 15, 1912, the Titanic, one of the largest ocean liners and the most luxurious, hit an iceberg and sank in less than three hours. Over 1,500 people died and 711 were saved. Could the disaster have been avoided? Why did this “unsinkable” ship sink? Did the ship’s design have flaws? Were the captain and crew negligent? What happened to the survivors? Were there changes made? Learn about all this and more. **(Note: this is the same course that had to be cancelled during the Summer 2011 semester due to bad weather. Please re-register if you would like to attend.)**

**Date & Time:** Friday, April 13; 10:00 a.m.—11:30 a.m.

**Place:** Mason District Governmental Center (Main Community Room), Annandale

**Course Size:** Min. 10, Max. Unlimited

**LLI Coordinator:** Salli Wise (703) 256-8001; [sarahwise7@verizon.net](mailto:sarahwise7@verizon.net)

**Leader:**

**MARY LIPSEY**, BA in History and Sociology; MA in Education; retired seventh grade American History teacher; co-author of *Braddock’s True Gold*; Braddock District Representative to Fairfax County History Commission; avid interest in first ladies and local history.

---

## Friday Afternoons

---

**Course 12W36P Poetry and You (4 Sessions)**

Join us for one of LLI’s long-time favorite courses and learn more about how poetry can change your life. We will read and talk about the work of contemporary poets as well as our favorite classics.

**Dates & Time:** Fridays, April 13, 20, 27, May 4; 1:30 p.m.—3:00 p.m.

**Place:** Little River United Church of Christ (Rooms 7 & 8), Annandale

**Course Size:** Min. 8, Max. 25

**LLI Coordinator:** Marianne Moerman (703) 751-0523; [mcmoerman@juno.com](mailto:mcmoerman@juno.com)

**Leader:**

**RICHARD RISK**, BA, University of Missouri. Retired from the Environmental Protection Agency. Founding member of LLI.

---

**Course 12W37P “Z.” A Film by Costa-Gavras (2 Sessions)**

The French film director Costa-Gavras made his international reputation with the 1969 political thriller “Z.” The film about the assassination of a political reformer in an unnamed European country ruled by a junta won the Academy Award for Best Foreign Film, the New York Film Critics Circle Award for Best Picture, and the Cannes Jury Prize. The quick-paced film makes extensive use of flashbacks as the doggedly honest chief prosecutor fights to learn the truth and bring the culprits to justice. Jean-Louis Trintignant, Yves Montand, and Irene Papas head the cast. We’ll discuss the political events in Greece that

inspired the film and the techniques Costa-Gavras employed to achieve suspense. The movie runs just over 2 hours. **Note: Lunch may be purchased (cash or credit card) in the Bistro at Goodwin House. Allow about 1 hour for lunch. Please advise your Course Coordinator if you plan on eating lunch in the Bistro so that the Coordinator can notify Goodwin House ahead of time.**

**Dates & Time:** Fridays, May 4, 11; 1:30 p.m.—3:00 p.m.

**Place:** Goodwin House (Media Room), Falls Church

**Course Size:** Min. 10, Max. 40

**LLI Coordinator:** Lois Czapiewski (703) 354-6103; [lo.czap@cox.net](mailto:lo.czap@cox.net)

**Leader:**

**MARCIA TOEPFER** (see Course 12W25A for bio information.)

---

## Saturday Morning

---

**Course 12W38A Spring Wildflower Walk at Riverbend Park, VA (1 Session)**

Welcome back the flowers of Spring! This year, we have a new venue. Riverbend Park is on the Potomac River, a short way upstream from Great Falls Park. Virginia bluebells should be at their peak at this time of year. The trail is mainly level, following the river, but may be muddy— wear appropriate footwear! Bring water and a hat, though the trail is mainly in the woods. **(Note: this is the same walk that had to be cancelled during the Winter/Spring 2011 semester due to bad weather. Please re-register if you would like to attend.)**

**Date & Time:** Saturday, April 14; 10:00 a.m.—12:00 p.m. **(Note course time.)**

**Place:** Riverbend Park, Great Falls, VA

**Course Size:** Min. 10, Max. 25

**LLI Coordinator:** Marianne Moerman (703) 751-0523; [mcmoerman@juno.com](mailto:mcmoerman@juno.com)

**Leader:**

**DORIS BALINSKY**, former LLI Board member and Curriculum Committee chair; currently chairs the Scholarship Committee; loves nature and leads wildflower walks for LLI in the spring.

---

## Day Trip

---

**DT 4-5-12 The Nation Takes Root on Capitol Hill**

Spend the day learning more about the early history of our capital city by seeing some of the interesting and historic sites southeast of the Capitol Building. Our excursion will include both walking tours with docents and riding tours on the coach with our own LLI member and tour guide, Jo Ann Porter. We will have lunch (on our own) in the thriving restaurant area of 8th Street near Barracks Row. And, if the famous cherry trees are out, we will tour the Tidal Basin at some point during the day.

**Congressional Cemetery Tour**

Purchased in 1807, the cemetery is privately owned by Christ Church, although it has received federal funds through the years. It has been called our “first national cemetery.” It contains the remains of 70 Representatives and 19 Senators. Our docent will guide us around this 35-acre cemetery and show us the burial sites of many famous Americans—John

Phillip Sousa (the “March King” and leader of the Marine Band), J. Edgar Hoover of the FBI, William Thorton (first architect of the Capitol), Civil War photographer Mathew Brady, and many more. We’ll also see the cenotaphs of many famous early statesmen (whose bodies were held there until they could be transported to their home states). More than half of the 60,000 graves are of children under the age of 5, which shows how high infant mortality rates were in those early years. Today, local residents help keep up the cemetery and also have organized a very successful dog park with special rules for its use. It is also open at Halloween for special events and at other times for picnicking.

#### Riding and Walking Tour

Our riding tour will include stops at Lincoln Park and the Eastern Market. We will walk to the John Phillip Sousa Home and the Marine Commandant’s Home (home of the first post of the Marine Corps, commissioned by Thomas Jefferson in 1801) from our stop at the 8th Street restaurant area—an area that is becoming one of the most fashionable places to dine in DC. You will be able to choose your dining preferences from many top quality eateries there.

#### Navy Yard/U.S Navy Museum Tour

The U.S. Navy Yard is the Navy’s oldest shore establishment, authorized in 1799 by the first Secretary of the Navy. Originally a shipbuilding facility, it developed into an ordnance production plant. Production ceased in 1961. Today, the Navy Yard houses the USN Museum, which collects, preserves, and interprets historic naval artifacts and

artwork for the information, education, and inspiration of naval personnel and the public. The Museum has over 5,000 artifacts and 40,000 square feet of exhibit space. Our docent will lead us through the museum and point out the highlights, such as the polar explorations, WW II gun mounts, models of famous ships, and much more.

**NOTE: There will be much walking on this day trip.**

**Date:** Thursday, April 5, 2012. **Cost:** \$40 for members; \$50 for non-members. Please submit check payable to LLI/NOVA with your registration. Be sure to sign the “Assumption of Risk and Acknowledgement of Responsibility” statement. **YOUR TRIP CONFIRMATION NOTICE WILL BE SENT TO YOU VIA E-MAIL. IF YOU DO NOT HAVE AN E-MAIL ADDRESS LISTED IN THE LLI HANDBOOK AND MEMBERSHIP DIRECTORY, PLEASE INCLUDE A SELF-ADDRESSED, STAMPED, LEGAL-SIZE ENVELOPE WITH YOUR CHECK AND REGISTRATION.**

**Time & Place of Departure:** The bus departs Little River United Church of Christ, Annandale, **promptly at 8:00 a.m.** and returns at **approximately 4:00 p.m.** Please arrive **at least 15 minutes prior to departure.**

**Trip Size:** Max. 44

**Leader/Assistant Leader:** Jo Ann Porter, 703-966-2237, [joaporter@cox.net](mailto:joaporter@cox.net); Ginny Moser, 703-451-7469, [gabby.guide@verizon.net](mailto:gabby.guide@verizon.net).

Please see the Tour Registration Form on page 19 and follow instructions.

# February

# 2012

## LLI Winter/Spring Program 2012

**Sun. Mon. Tues. Wed. Thurs. Fri. Sat.**

Sun.		Mon.	Tues.	Wed.	Thurs.	Fri.	Sat.
<b>January</b> Wednesday, 11: LLI Forum & Open House Monday, 23: 12W01A—Retirement Income: Charting a Course to Make Your Money Last Monday, 30: 12W02A—200th Anniversary of War of 1812				<b>1</b> LLI Forum & Open House	<b>2</b>	<b>3</b>	<b>4</b>
<b>5</b>	<b>6</b>	<b>7</b> 12W09P—History of the American Revolution	<b>8</b> 12W15P—History Presentations by NOVA Faculty	<b>9</b> 12W21A—Tea Presentation 12W28P—Great Decisions	<b>10</b> 12W33A—Trouble at the Border	<b>11</b>	
<b>12</b>	<b>13</b>	<b>14</b> 12W09P—History of the American Revolution	<b>15</b> 12W15P—History Presentations by NOVA Faculty	<b>16</b> 12W22A—Staging Your Home for Sale 12W28P—Great Decisions	<b>17</b> 12W33A—Trouble at the Border	<b>18</b>	
<b>19</b>	<b>20</b>	<b>21</b> 12W09P—History of the American Revolution	<b>22</b> 12W15P—History Presentations by NOVA Faculty	<b>23</b> 12W28P—Great Decisions	<b>24</b> 12W33A—Trouble at the Border	<b>25</b>	
<b>26</b>	<b>27</b> 12W03A—Escape: Bondage of the Past, Part II	<b>28</b> 12W09P—History of the American Revolution	<b>29</b> 12W15P—History Presentations by NOVA Faculty 12W16P—Is Forgiveness Possible?				

**Remove this calendar to use as a handy reference.**

# March

# 2012

## LLI Winter/Spring Program 2012

**Sun. Mon. Tues. Wed. Thurs. Fri. Sat.**

				<b>1</b> 12W28P—Great Decisions	<b>2</b>	<b>3</b>
<b>4</b>	<b>5</b> 12W06P—Finishing the Fight in the Pacific	<b>6</b> 12W09P—History of the American Revolution	<b>7</b> 12W16P—Is Forgiveness Possible? 12W17P—History of Impressionism, Part III	<b>8</b> 12W28P—Great Decisions	<b>9</b>	<b>10</b>
<b>11</b>	<b>12</b> 12W03A—Escape: Bondage of the Past, Part II 12W06P—Finishing the Fight in the Pacific	<b>13</b> LLI Forum & Open House 12W09P—History of the American Revolution	<b>14</b> 12W12A—Role of Biotechnology in Future Medicines 12W15P—History Presentations by NOVA Faculty 12W17P—History of Impressionism, Part III	<b>15</b> 12W23A—Earthquakes, Diamonds, Meteorites 12W28P—Great Decisions	<b>16</b>	<b>17</b>
<b>18</b>	<b>19</b> 12W03A—Escape: Bondage of the Past, Part II 12W06P—Finishing the Fight in the Pacific	<b>20</b> 12W09P—History of the American Revolution	<b>21</b> 12W13A—Looking for God in Scripture 12W15P—History Presentations by NOVA Faculty 12W17P—History of Impressionism, Part III	<b>22</b> 12W28P—Great Decisions	<b>23</b> 12W34A—Great Presidents: Lyndon Johnson	<b>24</b>
<b>25</b>	<b>26</b> 12W03A—Escape: Bondage of the Past, Part II 12W06P—Finishing the Fight in the Pacific	<b>27</b> 12W07A—Story of Light 12W09P—History of the American Revolution	<b>28</b> 12W13A—Looking for God in Scripture 12W14A—Identity Theft 12W15P—History Presentations by NOVA Faculty	<b>29</b> 12W28P—Great Decisions	<b>30</b> 12W34A—Great Presidents: Lyndon Johnson	<b>31</b>

**Remove this calendar to use as a handy reference.**

# April

# 2012

## LLI Winter/Spring Program 2012

<b>Sun.</b>	<b>Mon.</b>	<b>Tues.</b>	<b>Wed.</b>	<b>Thurs.</b>	<b>Fri.</b>	<b>Sat.</b>
<b>1</b>	<b>2</b>	<b>3</b> 12W08A—Topics of Interest: Steiner's Perspectives 12W09P—History of the American Revolution	<b>4</b> LLI Forum & Open House 12W13A—Looking for God in Scripture 12W18P—Study Travel 12W19P—Balancing Act	<b>5</b> 12W29P—How to Listen & Understand Opera DT 4-5-12—Day Trip: Nation Takes Root on Capitol Hill	<b>6</b>	<b>7</b>
<b>8</b>	<b>9</b>	<b>10</b> 12W08A—Topics of Interest: Steiner's Perspectives	<b>11</b> 12W14A—Identity Theft 12W18P—Study Travel 12W19P—Balancing Act	<b>12</b> 12W25A—Museum Master- pieces 12W29P—How to Listen & Understand Opera 12W30P—Make a Tote Basket 12W31P—Best of Bette Davis	<b>13</b> 12W35A—The RMS Titanic 12W36P—Poetry and You	<b>14</b> 12W38A—Spring Wildflower Walk/Riverbend Park, VA
<b>15</b>	<b>16</b> 12W04A—Beginners' Knitting	<b>17</b> 12W08A—Topics of Interest: Steiner's Perspectives	<b>18</b> 12W13A—Looking for God in Scripture 12W14A—Identity Theft 12W18P—Study Travel 12W19P—Balancing Act	<b>19</b> 12W24A—Atomic Chronicle 12W25A—Museum Masterpieces 12W29P—How to Listen/ Understand Opera 12W30P—Make a Tote Basket 12W31P—Best of Bette Davis	<b>20</b> 12W36P—Poetry and You	<b>21</b>
<b>22</b>	<b>23</b> 12W04A—Beginners' Knitting	<b>24</b> 12W08A—Topics of Interest: Steiner's Perspectives 12W10P—Algebra of Infinity	<b>25</b> 12W14A—Identity Theft 12W19P—Balancing Act	<b>26</b> 12W24A—Atomic Chronicle 12W25A—Museum Masterpieces 12W26A—Cherry Hill Farm Tea 12W29P—How to Listen & Understand Opera 12W30P—Make a Tote Basket 12W31P—Best of Bette Davis	<b>27</b> 12W36P—Poetry and You	<b>28</b>
<b>29</b>	<b>30</b> 12W04A—Beginners' Knitting					

**Remove this calendar to use as a handy reference.**

# May

# 2012

## LLI Winter/Spring Program 2012

**Sun. Mon. Tues. Wed. Thurs. Fri. Sat.**

		<b>1</b> 12W10P—Algebra of Infinity	<b>2</b> LLI Forum & Open House 12W19P—Balancing Act	<b>3</b> 12W24A—Atomic Chronicle 12W27A—Hist. of Hollywood 12W31P—Best of Bette Davis	<b>4</b> 12W36P—Poetry and You 12W37P—“L.” A Film by Costa-Gavras	<b>5</b>
<b>6</b>	<b>7</b> 12W04A—Beginners’ Knitting	<b>8</b> 12W11P—Bl. Pope John XXIII	<b>9</b> 12W19P—Balancing Act	<b>10</b> 12W24A—Atomic Chronicle 12W27A—Hist. of Hollywood 12W31P—Best of Bette Davis	<b>11</b> 12W37P—“L.” A Film by Costa-Gavras	<b>12</b>
<b>13</b>	<b>14</b> 12W04A—Beginners’ Knitting	<b>15</b>	<b>16</b>	<b>17</b>	<b>18</b>	<b>19</b>
<b>20</b>	<b>21</b> 12W04A—Beginners’ Knitting	<b>22</b>	<b>23</b>	<b>24</b> 12W27A—Hist. of Hollywood 12W32P—Wine, Types and Selection Of	<b>25</b>	<b>26</b>
<b>27</b>	<b>28</b>	<b>29</b>	<b>30</b>	<b>31</b> 12W27A—Hist. of Hollywood 12W32P—Wine, Types and Selection Of	<div style="border: 1px solid black; padding: 5px;"> <p style="text-align: center;"><b>June</b></p> <p>Mon., June 4: 12W05A—Meadowlark Bot. Grdhs. Wed., June 6: LLI Forum &amp; Open House Thu., June 7: 12W32P—Wine, Type/Selection Of Wed., June 13: 12W20P—Music of 1350—1420</p> </div>	

**Remove this calendar to use as a handy reference.**

While the activities of LLI Special Interest Groups (SIGs) are first and foremost for the benefit of LLI members, the Board recognizes that there may be occasions when non-members may be invited to participate. The Board supports the SIG Coordinator's flexibility to invite non-LLI members to participate in an activity whenever the objectives of the SIG would be enhanced by non-member participation.

## Special Interest Groups

### ARTS & SMARTS GROUP

The Arts & Smarts Group has a monthly trip to one of the many museums and art galleries in Washington, DC. We take advantage of a variety of visiting exhibitions, as well as touring some of the museums' permanent exhibits. We always have a docent. The tours are approximately one hour in length, after which we have a choice to enjoy a group lunch or continue on with more museum/gallery exploration. Information about our tours is available in the LLI Newsletter, on the LLI web site, or by contacting either Donna Trogler at (703) 751-8932 or [dtrogler@aol.com](mailto:dtrogler@aol.com); or Doug Johnson at (703) 628-3115 or [lj\\_dj3@yahoo.com](mailto:lj_dj3@yahoo.com).

### BRIDGE GROUP

The LLI Bridge Group meets twice monthly to play social, i.e., not duplicate, bridge. We are always looking for new players, and all levels of players are welcome in this very friendly game. You do not need a partner because we rotate partners, so you will play with everyone. If there are "extra" players, bridge play is rotated among all present. Please feel free to bring a brown bag lunch. Specific play dates are published in the Newsletter. Please contact the coordinators before you attend so that we can confirm the play date and ensure that we have sufficient card tables for attendees.

**Dates & Time:** Usually the second and fourth Wednesdays of each month; 10:00 a.m.—2:00 p.m., January 5 & 25, February 2 & 15, March 1 & 15, April 5 & 18, May 25 & 30, June 20 & 28. Occasionally, scheduling conflicts require that we play on a different day, so please always call ahead to ensure the date is correct.

**Place:** Mason District Governmental Center, Annandale  
**Coordinators:** Bob and Merry Huley, (703) 534-4819 or [roberthuley@cox.net](mailto:roberthuley@cox.net).

### COMMUNITY THEATRE GROUP

We are fortunate that many excellent stage productions, both drama and musical, are available in Northern Virginia through a number of very excellent community theatre organizations. LLI maintains a list of members who are interested in getting together to attend these productions. One or two members or couples volunteer to be "hosts" for an event, selecting a play from a provided list of theatres and their scheduled productions. The hosts then inform everyone (via e-mail) of the play, the theatre location, date and time (Sunday matinees are usually preferred). Also the hosts will select a restaurant near the theatre where some may wish to gather after or before the play to enjoy light fare, socialize and decide on upcoming productions. Those attending the theatre will each purchase their own tickets either at the box office or by reservations in accordance with the particular theatre's policy. An added benefit is that Senior tickets are offered at very reasonable costs.

Future plans of the Theatre Group will be in the Newsletter. If you are interested in further information, contact Norma Hughes at (703) 960-6279 or [nah.home@verizon.net](mailto:nah.home@verizon.net).

### CURRENT EVENTS GROUP

Given the excitement and fluidity of changes in current political and worldly events, the Current Events Group will meet the first Friday of each month for continued interesting and educational discussions. Topics reflect the current events surrounding the time of the meeting. We welcome all to share your ideas and/or learn more about current events—whatever is your pleasure.

**Dates & Time:** First Friday of each month; 10:00 a.m.—11:30 a.m., January 6, February 3, March 2, April 6, May 4, June 1.  
**Place:** Mason District Governmental Center (Small Conference Room), Annandale  
**Coordinator:** Charles Hulick (703) 750-3180 or [chulick@verizon.net](mailto:chulick@verizon.net). LLI members can receive reminder notices by contacting Marion Jacknow at (703) 698-8702 or [mjacknow@aol.com](mailto:mjacknow@aol.com).

### FAVORITE BOOKS CLUB

The Favorite Books Club meets monthly to discuss books the group has identified for review. The members select from a variety of genres, e.g., fiction, non-fiction, historical, contemporary, best sellers, classics, etc. We try to select only books available in paperback. Information on each selected book is published in the monthly LLI Newsletter prior to discussion.

**Dates & Time:** Third Thursday of each month; 11:30 a.m.—1:00 p.m., January 19, February 16, March 15, April 19, May 17, June 21.  
**Place:** To Be Announced  
**Coordinator:** Connie Fullerton (703) 764-3779 or [constance.fullerton@gmail.com](mailto:constance.fullerton@gmail.com).

### FRENCH CONVERSATIONALISTS

Under the expert guidance of Al Brothers, we will continue to strive to improve our French language skills. We hope to increase our appreciation of French culture by viewing French movies, listening to French music, and occasionally sampling some French cuisine. Please bring Barron's *French at a Glance* to class.

**Dates & Time:** Third Tuesday of each month; 10:00 a.m.—11:30 a.m., January 17, February 21, March 20, April 17, May 15, June 19.  
**Place:** Mason District Governmental Center (Small Conference Room), Annandale  
**Coordinator:** Sally Reynolds (703) 352-7494 or [saldonreyn@aol.com](mailto:saldonreyn@aol.com).

---

### GOURMAND GROUP

The Gourmand Group meets monthly and enjoys adventures in dining out. Each month a member plans a particular meal event that can include a traditional meal prepared at home, a full English tea, or an ethnic meal at a local restaurant. Contact Mary Underwood at (703) 329-8391 or [maryunderwood29@verizon.net](mailto:maryunderwood29@verizon.net) for further information.

#### Bacchus Wine Tasting Subgroup

Bacchus Wine Tasting is a subgroup under the Gourmands. This group is for anyone who enjoys having a glass of wine with others; our feeling is that everyone is a connoisseur of the wines they like. The current plan is to have an event once every three months. Proposed events include a wine tasting at a local wine bar/shop, a wine and cheese gathering at a member's home, and a day trip to a Virginia winery. Contact Anne Austin at (703) 569-5994 or [abbaustin@aol.com](mailto:abbaustin@aol.com) for further information.

---

### NIMBLE FINGERS

Share your enjoyment of needlecrafts with fellow LLI members. Bring a small project to work on; learn a new stitch, technique or craft; get help on a particular problem; discover a new source of supplies or classes or just chitchat. Any type of needlecraft is welcome—knitting, crochet, embroidery, cross stitch, needlepoint, tatting, etc.

**Dates & Time:** Second Wednesday of each month; 10:00 a.m.—12:00 p.m., January 18 (note third Wednesday), February 8, March 21 (note third Wednesday), April 11, May 9, June 13.

**Place:** Mason District Governmental Center (Small Conference Room) Annandale

**Coordinator:** Bev Portman (703) 560-6740 or [firse@juno.com](mailto:firse@juno.com).

---

### PHOTOGRAPHY GROUP

LLI members have a wide range of photographic abilities and interests and share a common desire to hone existing skills or learn new ones. Meetings of this SIG will focus on a specific topic or area of interest decided by the group. Topics to date have included "Sorting and Filing Your Digital Pictures" and "Understanding Exposure." New members are always welcome.

**Dates & Time:** Third Friday of each month; 10:00 a.m.—12:00 p.m., January 20, February 17, March 16, April 20, May 18, June 15.

**Place:** King's Park Library (Small Conference Room), Burke

**Coordinator:** Buck Myers (703) 532-3726 or [hbm@hbmphoto.com](mailto:hbm@hbmphoto.com).

---

### WALKABOUTS

Weather permitting, the Walkabouts Group meets twice each month for an outdoor walk for fun and health. Each walk begins at noon and lasts about one hour. Dates and locations for scheduled walks are listed in the LLI Newsletter and on the LLI web site. Notifications of any changes or special details not included in the published schedule are coordinated through Merry Macke. She can be reached at (703) 451-3248 or by e-mail at [merry.macke@verizon.net](mailto:merry.macke@verizon.net). Members may sign up to receive notifications by contacting the coordinator.

---

*Please register as soon as possible, but not later than Wednesday, December 21, 2011.*

---

# Directions to Class Locations — Winter / Spring 2012

**Annandale United Methodist Church**, 6935 Columbia Pike, Annandale.

*Directions from the Beltway*

Drive east on Little River Turnpike (Route 236). Proceed through 5 traffic lights and get into the left lane. At the next traffic light (Backlick Road), which is at the intersection where Fuddrucker's restaurant is located on the left and a Mobil service station is on the right, take a left onto Backlick Road and bear right immediately. You will go only a short block and after passing a Jiffy Lube, turn right onto Columbia Pike. Drive to the second traffic light which is at Gallows Road where you will see a small old white church on the right. Proceed just beyond the traffic light and turn right into the parking lot. Enter the brick church through the main entrance and look for signs.

**Cherry Hill Farm**, 312 Park Avenue, Falls Church.

*Directions from the Beltway*

Take Route 50 East (Arlington Boulevard toward Arlington). Turn left on Annandale Road (VA-649). Go about 1.5 miles and turn right at the light onto South Maple Avenue. Then go straight through the light at W. Broad Street. At the first stop sign after W. Broad Street, turn left onto Park Avenue. Cherry Hill Farm will be on your right. You'll see a large white house, set back from the road. The Farm is directly across the street from 313 Park Avenue, which is a 4-story office building. In addition to street parking on Park Avenue or any of the surrounding side streets, parking is also available in the Community Center parking lot off of Little Falls Street. Little Falls Street is the first right after you turn left onto Park Avenue.

**Goodwin House**, 3440 South Jefferson Street, Falls Church.

*Directions from Bailey's Crossroads (intersection of Columbia Pike and Leesburg Pike/Route 7)*

Go east on Leesburg Pike/Route 7. Turn left at the traffic light at South Jefferson Street. South Jefferson is located between two shopping centers, "Crossroads Place" and "Leesburg Pike Plaza." As a landmark, look for the Olive Garden restaurant on your left as you turn onto South Jefferson. Follow South Jefferson Street. Go through one traffic light, and go to the Goodwin House entry driveway. Go to the right and follow the circular drive back toward the left. A number of visitors' and handicapped parking spots are available there; a larger number are available along the side of the building.

**Greenspring Village**, 7440 Spring Village Drive, Springfield.

*Directions from the Beltway toward Richmond*

Take Exit 169-B toward Old Keene Mill Road. Bear right at the Brandon Avenue exit and turn left onto Bland Street. Then turn left onto Amherst Avenue. Amherst will become South Backlick Road. Continue on Backlick Road to the exit for the Springfield/Franconia Parkway West (Route 7900). Turn right at the first traffic light onto Spring

Village Drive into the entrance to Greenspring Village.

Advise the guard station attendant that you are going to be attending a "Lifetime Learning Institute" class. Follow signs to either Village Square or Town Center. You will need to sign a guest register at the reception desk. The receptionist will give you directions to your classroom.

*Directions from the Fairfax County Parkway (Route 7100)*

Going east toward Springfield, continue to Spring Village Drive and turn left into Greenspring Village.

Advise the guard station attendant that you are going to be attending a "Lifetime Learning Institute" class. Follow signs to either Village Square or Town Center. You will need to sign a guest register at the reception desk. The receptionist will give you directions to your classroom.

**James Lee Community Center**, 2855 Annandale Road, Falls Church.

*Directions from the Beltway*

Take Arlington Boulevard (Route 50) toward Falls Church to Annandale Road. Turn left on Annandale Road (going toward the center of Falls Church) to the traffic light at James Lee Street. Turn right into the parking lot. Please enter the building on the parking lot side and take an immediate right to the classrooms.

**Little River United Church of Christ**, 8410 Little River Turnpike, Annandale.

*Directions from the Beltway*

Go west on Little River Turnpike (Route 236) to the second traffic light (you will see the NOVA campus on the left). Turn right at the light and follow the road to the church parking lot.

*Directions from Wakefield Chapel Road*

Turn right onto Little River Turnpike (Route 236) and get into the left lane. Turn left at the first traffic light and follow the road to the church parking lot.

**Mason District Governmental Center**, 6507 Columbia Pike, Annandale.

*Directions from the Beltway*

Go east on Little River Turnpike (Route 236). Turn left onto John Marr Drive (next light after passing Giant Food on the left). Turn right at the next light, which is Columbia Pike. Go through several traffic lights. Following the traffic light at the intersection with Whispering Lane, there is a sign in the median reading "Fairfax County Police Station." Proceed a short distance and turn right into the parking lot of the Center.

**Meadowlark Botanical Gardens**, 9750 Meadowlark Gardens Court, Vienna.

*Directions from the Beltway*

Proceeding on the Beltway toward Baltimore (and the American Legion Bridge), exit onto Route 123

South (Dolley Madison Boulevard) and proceed through two traffic signals (past Tysons Corner Center on your left and Tysons II Galleria on your right) to the intersection with Gallows Road (the third traffic signal). Turn right onto Gallows Road, moving immediately into the left turn lane. The next intersection is with Old Courthouse Road (and another traffic signal). Turn left onto Old Courthouse Road and proceed until it intersects with Beulah Road on your left. Proceed straight through this intersection (you may notice that the road's name changed from Old Courthouse to Beulah even though you kept straight...only in Virginia!). Proceed on Beulah Road until you reach Meadowlark Gardens (and Meadowlark Gardens Court) on your left. Turn into the Court and you will find parking on your left.

### **NOVA Campus Buildings**

(Refer to campus map on p. 4.)

Parking for all Campus Classes and Activities. **PLEASE PARK IN THE PAY PARKING GARAGE NEXT TO THE CULTURAL CENTER. THERE IS A \$1.00 PER HOUR CHARGE TO PARK IN THE GARAGE.**

**Ernst Community Cultural Center (CE)**, also called the NOVA Cultural Center, Annandale Campus, building marked "A" on the map. The Forum is the large open space (with fireplace) on the mezzanine level. Seminar rooms are on the mezzanine level adjacent to the Forum. The Dance Room is located on the first floor behind the elevator.

**Riverbend Park**, 8700 Potomac Hills Street, Great Falls, VA.

#### *Directions from the Beltway (Route 495)*

Take I-495 toward Maryland. Take Exit 44 to Great Falls, VA (before crossing the river into Maryland). Turn left on Georgetown Pike (Route 193 West) toward Great Falls. At the second light (after about 4.7 miles), turn right onto Riverbend Road (this light is about 0.3 miles beyond the turnoff for Great Falls Park). Follow the brown signs to Riverbend Park. After about 2.3 miles, make a right on Jeffrey Road. After about 0.8 miles, you will see the large sign for Riverbend Park. Take the RIGHT fork toward the Visitor Center (Potomac Hills Street). We will meet on the porch of the Visitor Center; there are restrooms and comfortable chairs here. Note: the roads are narrow, winding, 2-lane roads, so leave yourself adequate time to reach the park.

If you come from Old Dominion Drive, turn left at the light for Great Falls Park on Georgetown Pike. Then follow the directions above.

**St. Matthew's United Methodist Church**, 8617 Little River Turnpike, Annandale.

#### *Directions from the Beltway*

Drive west on Little River Turnpike (Route 236). Pass the NOVA campus and Wakefield Chapel Road (second and third traffic lights). Take the next left (which does not have a traffic light) onto Wakefield Drive; immediately turn right and then left into the church parking lot.

#### *Directions from Braddock Road going East*

Turn left onto Wakefield Chapel Road. Continue for approximately 1.3 miles (passing NOVA on the right) and turn left onto Virginia Avenue. At the stop sign turn right onto Wakefield Drive and then turn left into the church parking lot.

**Classroom:** Enter the classroom on the far left-hand side of the building through a basement door. However, if this side basement door is not yet open, enter the church through the main doors in the center. Follow the signs to the main church office. Right before the office is a stairwell on your left. You need to open the door to see the stairwell. Walk down one level and the classroom is a few feet from the foot of the stairs.

**The Virginian**, 9229 Arlington Boulevard (Route 50), Fairfax.

#### *Directions from the Beltway and Little River Turnpike (Route 236)*

Drive west on Little River Turnpike to Pickett Road. Turn right on Pickett Road and drive to Arlington Boulevard. Turn right onto Arlington Boulevard and then turn right at the first traffic light which will take you into The Virginian's driveway.

#### *Directions from the Beltway and Arlington Boulevard (Route 50)*

Drive west on Arlington Boulevard. Turn left at the first traffic light\*\* after Nutley Street into The Virginian's driveway. Parking is permitted in any vacant slot that is not designated as handicapped or employee parking.

\*\*Landmark at this traffic light: Stonehurst Drive is on the right. Be sure to take a left at the traffic light into The Virginian complex.

**The Woodlands**, 4320 Forest Hill Drive, Fairfax.

#### *Directions from the Beltway*

Take the Braddock Road West exit and go west on Braddock Road (approximately 7 miles) to Shirley Gate Road (Route 655). Turn right onto Shirley Gate Road and proceed to the first traffic light at Lee Highway. Turn left onto Lee Highway and then turn left at the next traffic light (Forest Hill Road). Continue to the second entrance on your right at The Woodlands sign.

Parking is permitted at The Woodlands as well as at the first building, The Gardens, next door. If both parking lots are full, street parking is permitted on Forest Hill Drive.

#### *Directions from I-66*

Take I-66 to the exit for Route 50 East (Fairfax). Go right at the first traffic light (Waples Mill Road). Turn right onto Lee Highway, and then turn left at the first light (Forest Hill Drive). Take the second entrance on the right into The Woodlands on the left.

Parking is permitted at The Woodlands as well as at the first building, The Gardens, next door. If both parking lots are full, street parking is permitted on Forest Hill Drive.

## LLI Tour Registration Form

### Assumption of Risk and Acknowledgement of Responsibility

As a prerequisite for participation, this Assumption and Acknowledgement must be signed and **two** emergency contact numbers must be supplied.

The tours of the Lifetime Learning Institute of Northern Virginia require walking and the physical capability to access sites that may have structural obstacles. By participating, I assume the risks inherent in this tour and agree to hold LLI, its Board of Directors, Administrator, volunteers, and other agents harmless from any and all claims from bodily injury and/or property damage that result from my participation in this tour, or my inability to participate fully.

Further, I understand that, should I require personal assistance to participate in this tour, I am responsible for securing such assistance. That responsibility includes registering a person with LLI who can and will be totally responsible for providing all assistance. I will register the person by having him or her sign below. I also understand that LLI reserves the right to deny a request to participate in this tour if, as determined by LLI, such participation would impede the tour's operation or diminish the enjoyment of other participants.

_____	/	_____
Participant Signature		Emergency Contact No. 1 / Emergency Contact No. 2
_____	/	_____
Participant Signature		Emergency Contact No. 1 / Emergency Contact No. 2

Tour Title: The Nation Takes Root on Capitol Hill Tour #: DT 4-5-12

Date of Day Trip: Thursday, April 5, 2012

Tour Fee: Members: \$40 Non-members: \$50

Name: \_\_\_\_\_

Phone: \_\_\_\_\_ E-Mail: \_\_\_\_\_

Address: \_\_\_\_\_

City: \_\_\_\_\_ State: \_\_\_\_\_ ZIP: \_\_\_\_\_

Number of reservations: \_\_\_\_\_ Total Cost: \_\_\_\_\_

Checks should be made payable to *LLI / NOVA*.

Please send to:

LLI — c/o Div. of Continuing Education  
NOVA Annandale Campus  
8333 Little River Turnpike  
Annandale, VA 22003-3743

*For Office Use Only*

Am't Paid: \_\_\_\_\_

Check #: \_\_\_\_\_

#### TO BE REGISTERED:

1. Each person must sign the above Assumption of Risk and Acknowledgement of Responsibility.
2. Enclose a check in payment for this trip only.
3. If you do not have an e-mail address listed in the LLI Handbook and Membership Directory, please enclose a self-addressed, stamped envelope for this trip only.

**Fees & Information:** Jo Ann Porter (703) 966-2237 joaporter@cox.net, or Ginny Moser (703) 451-7469, ginny.guide@verizon.net

**Reservations & Payment:** Payment of fee is required at time of registration. Reservations are accepted on a first-come, first-served basis.

**Refunds & Cancellations:** Refunds will be made if notice is received by March 26, 2012, and if a trip replacement can be found, less any non-refundable deposits (including the \$10 administrative cost per person). After March 26, all costs are non-refundable. For day trips, LLI does NOT follow Fairfax County Public School closings. The trip will go unless you are notified otherwise. Refunds will be made after the trip is completed.

**Notification:** You will receive confirmation by e-mail. If you do not have an e-mail address, you will receive confirmation in your self-addressed, stamped envelope. If you do not receive either, please contact Jo Ann Porter at (703) 966-2237, joaporter@cox.net, or Ginny Moser at (703) 451-7469, ginny.guide@verizon.net, to verify your registration.



## LLI Course Registration Form — Winter/Spring 2012

◆◆◆◆◆ Please one form per person ◆◆◆◆◆

Name: \_\_\_\_\_ Telephone: \_\_\_\_\_

E-mail: \_\_\_\_\_

Return Form to: LLI/NOVA c/o Continuing Education  
8333 Little River Turnpike  
Annandale, VA 22003-3743

Date: \_\_\_\_\_

In the form's priority column, please number your class choices by preference, *i.e.*, 1 = 1st choice, 2 = 2nd choice, *etc.*

Priority	Class Number	Class Name	Fee	Check Number	FOR OFFICE USE ONLY * Action/Comments
	12W01A	Retirement Income: Charting a Course to Make Your Money Last			
	12W02A	200th Anniversary of the War of 1812			
	12W03A	"Escape...the Bondage of the Past:" Part II			
	12W04A	Knitting for Beginners and Others			
	12W05A	Meadowlark Botanical Gardens			
	12W06P	Finishing the Fight in the Pacific			
	12W07A	The Story of Light			
	12W08A	Carl Steiner's Perspectives			
	12W09P	History of the American Revolution			
	12W10P	The "Algebra of Infinity" and Incompleteness			
	12W11P	Bl. Pope John XXIII			
	12W12A	The Role of Biotechnology in Future Medicines			
	12W13A	Looking for God in Scripture			
	12W14A	Identity Theft			
	12W15P	History Presentations by NOVA Faculty			
	12W16P	Is Forgiveness Possible?			
	12W17P	A History of Impressionism, Part III			
	12W18P	Study Travel: Spain and Portugal			
	12W19P	Balancing Act			
<i>Continued on next page</i>					

\* To be completed by LLI Office. **A** = registration accepted; **C** = course canceled; **W** = wait-listed (you will be notified if space becomes available).

**REMINDERS:**

1. Have you listed your class choices by your priority?
2. Have you enclosed separate checks, payable as stated in the catalogue's class description, for any class with a required fee?
3. Have you enclosed a stamped, self-addressed envelope (preferably business size)?

Priority	Class Number	Class Name	Fee	Check Number	FOR OFFICE USE ONLY * Action/Comments
<i>Continued from other side</i>					
	12W20P	The Remarkable Music of 1350 to 1420 in Western Europe			
	12W21A	Tea Presentation & Tasting: Pairing Tea and Chocolates	\$ 20.00		
	12W22A	Staging Your Home for Sale			
	12W23A	Earthquakes, Diamonds, Meteorites			
	12W24A	The Atomic Chronicle			
	12W25A	The Metropolitan Museum of Art			
	12W26A	Cherry Hill Farm — Tea and Tour	\$ 26.00		
	12W27A	History of Hollywood			
	12W28P	Great Decisions	\$ 20.00		
	12W29P	How to Listen to and Understand Opera			
	12W30P	Make a Tote Basket	\$ 17.00		
	12W31P	The Best of Bette Davis			
	12W32P	Wine, the Types and Selection Of			
	12W33A	Trouble at the Border			
	12W34A	Great Presidents: Lyndon Johnson			
	12W35A	The RMS Titanic			
	12W36P	Poetry and You			
	12W37P	“Z:” A Film by Costa-Gavras			
	12W38A	Spring Wildflower Walk at Riverbend Park, VA			

\* To be completed by LLI Office. **A** = registration accepted; **C** = course canceled; **W** = wait-listed (you will be notified if space becomes available).

**REMINDERS:**

1. Have you listed your class choices by your priority?
2. Have you enclosed separate checks, payable as stated in the catalogue's class description, for any class with a required fee?
3. Have you enclosed a stamped, self-addressed envelope (preferably business size)?

## LLI Course Registration Form — Winter/Spring 2012

◆◆◆◆◆ Please one form per person ◆◆◆◆◆

Name: \_\_\_\_\_ Telephone: \_\_\_\_\_

E-mail: \_\_\_\_\_

Return Form to: LLI/NOVA c/o Continuing Education  
8333 Little River Turnpike  
Annandale, VA 22003-3743

Date: \_\_\_\_\_

In the form's priority column, please number your class choices by preference, *i.e.*, 1 = 1st choice, 2 = 2nd choice, *etc.*

Priority	Class Number	Class Name	Fee	Check Number	FOR OFFICE USE ONLY * Action/Comments
	12W01A	Retirement Income: Charting a Course to Make Your Money Last			
	12W02A	200th Anniversary of the War of 1812			
	12W03A	"Escape...the Bondage of the Past:" Part II			
	12W04A	Knitting for Beginners and Others			
	12W05A	Meadowlark Botanical Gardens			
	12W06P	Finishing the Fight in the Pacific			
	12W07A	The Story of Light			
	12W08A	Carl Steiner's Perspectives			
	12W09P	History of the American Revolution			
	12W10P	The "Algebra of Infinity" and Incompleteness			
	12W11P	Bl. Pope John XXIII			
	12W12A	The Role of Biotechnology in Future Medicines			
	12W13A	Looking for God in Scripture			
	12W14A	Identity Theft			
	12W15P	History Presentations by NOVA Faculty			
	12W16P	Is Forgiveness Possible?			
	12W17P	A History of Impressionism, Part III			
	12W18P	Study Travel: Spain and Portugal			
	12W19P	Balancing Act			

*Continued on next page*

\* To be completed by LLI Office. **A** = registration accepted; **C** = course canceled; **W** = wait-listed (you will be notified if space becomes available).

### REMINDERS:

1. Have you listed your class choices by your priority?
2. Have you enclosed separate checks, payable as stated in the catalogue's class description, for any class with a required fee?
3. Have you enclosed a stamped, self-addressed envelope (preferably business size)?

Priority	Class Number	Class Name	Fee	Check Number	FOR OFFICE USE ONLY * Action/Comments
<i>Continued from other side</i>					
	12W20P	The Remarkable Music of 1350 to 1420 in Western Europe			
	12W21A	Tea Presentation & Tasting: Pairing Tea and Chocolates	\$ 20.00		
	12W22A	Staging Your Home for Sale			
	12W23A	Earthquakes, Diamonds, Meteorites			
	12W24A	The Atomic Chronicle			
	12W25A	The Metropolitan Museum of Art			
	12W26A	Cherry Hill Farm — Tea and Tour	\$ 26.00		
	12W27A	History of Hollywood			
	12W28P	Great Decisions	\$ 20.00		
	12W29P	How to Listen to and Understand Opera			
	12W30P	Make a Tote Basket	\$ 17.00		
	12W31P	The Best of Bette Davis			
	12W32P	Wine, the Types and Selection Of			
	12W33A	Trouble at the Border			
	12W34A	Great Presidents: Lyndon Johnson			
	12W35A	The RMS Titanic			
	12W36P	Poetry and You			
	12W37P	“Z:” A Film by Costa-Gavras			
	12W38A	Spring Wildflower Walk at Riverbend Park, VA			

\* To be completed by LLI Office. **A** = registration accepted; **C** = course canceled; **W** = wait-listed (you will be notified if space becomes available).

**REMINDERS:**

1. Have you listed your class choices by your priority?
2. Have you enclosed separate checks, payable as stated in the catalogue's class description, for any class with a required fee?
3. Have you enclosed a stamped, self-addressed envelope (preferably business size)?

# LLI / NOVA Membership Form

Phone: (703) 503-0600 E-Mail: [llinova@juno.com](mailto:llinova@juno.com)

Title: Mr., Mrs., Ms., Dr., Other \_\_\_\_\_ (circle one)

Please indicate if any information differs from latest directory.

Name \_\_\_\_\_

Address \_\_\_\_\_

City \_\_\_\_\_ State \_\_\_\_\_ ZIP \_\_\_\_\_ - \_\_\_\_\_

Phone Number(s): Home ( ) \_\_\_\_\_ Other ( ) \_\_\_\_\_

E-Mail Address \_\_\_\_\_

**Fee: \$110 per year for individual membership.** Checks should be made payable to **LLI / NOVA**

Send to: Lifetime Learning Institute of Northern Virginia  
c/o Division of Continuing Education, NOVA Annandale Campus  
8333 Little River Turnpike  
Annandale, VA 22003-3743

As a general practice LLI does not refund membership dues. Under extenuating circumstances LLI will consider requests for refunds if they are made in writing within 30 days of joining the Institute.

**Please also complete the following:**

Date \_\_\_\_\_  New  
Amount Paid \_\_\_\_\_  Renewal  
Check # \_\_\_\_\_

LLI is operated by volunteers. This is part of our education as well as an opportunity to meet other people and be involved. If you are willing to help in some area, please indicate in which area(s) below.

- |  |   |  |
|--|---|--|
| <input type="checkbox"/> Present a Course            | <input type="checkbox"/> Plan a Course          | <input type="checkbox"/> Coordinate a Course |
| <input type="checkbox"/> Serve on a Committee        | <input type="checkbox"/> Serve on the LLI Board | <input type="checkbox"/> Help in the Office  |
| <input type="checkbox"/> Assist with Travel Planning | <input type="checkbox"/> Other _____            |  |

If you have any questions about volunteer opportunities, contact the LLI Volunteer Coordinator, Merry Macke, at [merry.macke@verizon.net](mailto:merry.macke@verizon.net) or (703) 451-3248.



# LLI / NOVA Membership Form

Phone: (703) 503-0600 E-Mail: [llinova@juno.com](mailto:llinova@juno.com)

Title: Mr., Mrs., Ms., Dr., Other \_\_\_\_\_ (circle one)

*Please indicate if any information differs from latest directory.*

Name \_\_\_\_\_

Address \_\_\_\_\_

City \_\_\_\_\_ State \_\_\_\_\_ ZIP \_\_\_\_\_ - \_\_\_\_\_

Phone Number(s): Home ( ) \_\_\_\_\_ Other ( ) \_\_\_\_\_

E-Mail Address \_\_\_\_\_

**Fee: \$110 per year for individual membership.** Checks should be made payable to **LLI / NOVA**

*Send to:* Lifetime Learning Institute of Northern Virginia  
c/o Division of Continuing Education, NOVA Annandale Campus  
8333 Little River Turnpike  
Annandale, VA 22003-3743

*As a general practice LLI does not refund membership dues. Under extenuating circumstances LLI will consider requests for refunds if they are made in writing within 30 days of joining the Institute.*

**Please also complete the following:**

Date \_\_\_\_\_  New  
Amount Paid \_\_\_\_\_  Renewal  
Check # \_\_\_\_\_

LLI is operated by volunteers. This is part of our education as well as an opportunity to meet other people and be involved. If you are willing to help in some area, please indicate in which area(s) below.

- |  |   |  |
|--|---|--|
| <input type="checkbox"/> Present a Course            | <input type="checkbox"/> Plan a Course          | <input type="checkbox"/> Coordinate a Course |
| <input type="checkbox"/> Serve on a Committee        | <input type="checkbox"/> Serve on the LLI Board | <input type="checkbox"/> Help in the Office  |
| <input type="checkbox"/> Assist with Travel Planning | <input type="checkbox"/> Other _____            |  |

If you have any questions about volunteer opportunities, contact the LLI Volunteer Coordinator, Merry Macke, at [merry.macke@verizon.net](mailto:merry.macke@verizon.net) or (703) 451-3248.



## Program Compiled by the Curriculum Committee

Gina Trapp – Chairperson

(h) 703-522-7528 (email) GTrapp\_26@msn.com

Moe Moser – Space Coordinator

Doris Balinsky

Brent Beeson

Pat Daniels

Ellen Gale

Lorin Goodrich

Paul Hople

Chuck Hulick

Doug Johnson

Ed McKnight

Marianne Moerman

Don Reynolds

Peter Schwarzkopf

Mary Underwood

Salli Wise

LLI President — Paul Hople

(h) 703-978-9381

(fax) 703-425-5515

(email) pbhople@cox.net

The Curriculum Committee is charged with identifying a wide range of appropriate courses, arranging for the course instructors and locations and publishing the Program Catalogue with the required information.

If you would like to participate on the Committee to help develop plans for future semesters, please contact the Chairperson.

For suggestions for courses to be included, contact any of the above members.

LLI reserves the right to deny a request for participation in any of its sponsored courses, programs and tours, or to terminate participation therein if, as determined by LLI, such participation would substantially impede its operation or diminish the enjoyment of other participants.

*LLI is an equal opportunity institution and does not discriminate on the basis of race, color, or ethnic origin. It is a 501 (c) (3) organization and contributions are deductible to the extent allowed by law.*



**Lifetime Learning Institute**  
c/o Division of Continuing Education, NOVA Annandale  
8333 Little River Turnpike  
Annandale, VA 22003-3743  
Phone: (703) 503-0600 / FAX: (703) 503-5350 / E-Mail: llinova@juno.com

NON-PROFIT ORG.  
U.S. POSTAGE  
**PAID**  
Permit No. 2192  
Merrifield, VA

**Time Sensitive Material**

**POSTMASTER: Please Deliver by December 3, 2011**

**Change Service Requested**

**Reminder:  
Registration closes  
December 21, 2011**