



Active Adults
Inspired Learning
Travel & Friendship



Volume 24—Number 1

News & Views

January 2020

Wed., Jan. 8, LLI/NOVA Forum

Ernst Cultural Center (CE)

NOVA Annandale Campus

Social Time at 9:30 a.m.

LLI/NOVA Announcements at 9:50 a.m.

Forum Speaker at 10:00 a.m.



A WORLD BANK OFFICIAL DISCUSSES “ICELAND: FROM RAGS TO RICHES”

LEARN ABOUT THE ECONOMIC AND SOCIAL PROGRESS AND INITIATIVES AMONG NOR-DIC COUNTRIES.

Geir H. Haarde was Prime Minister of Iceland from 2006-2009 and served as the Ambassador of Iceland to the United States from 2015-2019. Presently he is executive director at the Board of the Executive Directors of the World Bank Group representing Denmark, Estonia, Finland, Iceland, Latvia, Lithuania, Norway and Sweden.

There is much to learn about the economic and social progress of these countries. By and large, they are successful private-market capitalist economies, having robust growth rates yet with taxpayer-funded programs such as universal

health coverage, tuition-free college, leave for new parents for up to one year, and generous help with child care.

The most recent World Happiness Report lists the Finns to be the happiest people in the world, followed closely by Norwegians, Danes, Swiss and Icelanders. Nordic countries also lead in combating climate change and starting other advanced environmental programs.

Amb. Haarde will offer an inside look into the workings of the World Bank and a preview of upcoming global projects.

Geir Haarde holds a master's degree in economics from the University of Minnesota (1977), a master's degree with distinction in international relations from Johns Hopkins University School of Advanced International Studies (1975), and a bachelor's degree magna cum laude in economics from Brandeis University, Waltham, MA (1973).

Think internationally when you come to the Forum for this stimulating presentation.

**Happy
New Year!**

Bing Free Image



President's Message

Kudos and Happy New Year!

This month we celebrate one year of being totally digital, a rare achievement for any LLI, regardless of the membership size. I attended an LLI conference last July where roughly 100 LLI representatives were present, and none that I met had been able to perform all administrative and finance roles internally and/or to operate totally digitally. Our accomplishment is no small feat.

This is due to the collective collaboration of our entire organization. Yep, the Automation Committee (Buck Meyers, Kathryn O'Toole and Bob Huley) shepherded the transition masterfully last January, and we owe them a big shout-out for a fantastic year. We also owe an even larger shout-out to each of you for supporting this major transition.

There were many well-wishers and volunteers supporting us in the background. Among some of those whom we may not appreciate are Dick Robison and the Curriculum Committee; Loren Brandman and Rich Davis, Treasurer/Assistant Treasurer; Bob Huley and the Budget and Finance Committee. Mary Jablonski bravely took on developing and producing our electronic newsletter with little background. Am certain she can present a class on this subject with ease (lol). Also, Dick Martin is reconfiguring our scholarship program for our current program year so that it, too, will be more efficient and digital.

So much of what we accomplish is bottom up, not top down. Nan Peck, on her own initiative, started collecting and producing our Forum announcements that cascade on the giant screen prior to the beginning of the monthly Forums.

We welcome your input and assistance as we proceed with a few major 2020 projects. For example, we entered our 25th year last September, and Bonnie Hopler and Martie Klee will co-chair our silver anniversary celebration in late spring.

These two also co-chaired our 10th anniversary celebration.

On behalf of the Board, SIGs, and Committee Chairs, we extend our warmest thoughts and best wishes for a 2020 that is filled with peace, good health, happiness, and prosperity.

Best, Anna

Community Outreach

St. Mary of Sorrows Catholic Church in Fairfax has been running a food pantry for many years, aided by parishioners and volunteers. As much as 2,000 pounds of food is distributed each month (more in November and December), and by January the shelves are nearly depleted and need replenishment.



Please consider donating canned meats, tuna, fruit, vegetables, chili and soups, rice, pasta and pasta sauces, cereals and granola bars, peanut butter, cooking oil, crackers, macaroni and cheese, juice (single-serve boxes), and cake and brownie mixes. (No glass jars, please.)

Ray and Mary Lu Bednarsky will deliver our donations.

After Forum Lunch Bunch

At Pan Am Family Restaurant

Join the group for lunch after the January Forum. We'll meet at Pan Am Family Restaurant, 3051 Nutley St., in the Pan Am Shopping Center in Fairfax. The restaurant is known for its Greek cuisine, but there's also an American menu and a salad bar. Paul and Bonnie Hopler will host and will get a count at the Forum. Contact them with any questions.

Remembering the Holiday Party

“Rekindle Holiday Memories”

Prior to the recent Holiday Party, registrants were asked to respond to these simple queries, relating to their experiences as a child age 10 or younger:

- Where did you live?
- What holiday food do you remember?
- What was a favorite toy or game received at the holidays?

Many attendees responded and Janice Viola and I enjoyed receiving every one.

Where did you live? 16 states were represented plus two foreign countries (England and Taiwan). In alphabetical order, the states ranged from Illinois to Wisconsin, with six people from New York, seven from Ohio, and eight from Pennsylvania.

What holiday food do you remember? Two things were fun about these responses:

- No matter in which part of the USA you grew up, your favorite food choices were the same, with cookies leading the list, followed by other sweets, such as various pies, cinnamon rolls, fruit cake, the nut roll known as Kolachi, spritz cookies made with a cookie press, stolen, the Slovak dessert of kolotchuky, and peanut brittle made by parents. From England the memory was of gingerbread hearts and from Taiwan, horseradish holiday cake. My favorite, though, is of an ice cream “snow ball” on Christmas Eve... peppermint ice cream covered with coconut and decorated with a red candle.
- While these may not taste as good today as you recall them, all are still available for you to make or purchase.

What was a favorite toy or game received at the holidays? Bicycles, dolls, and games were the top choices in this category. Of the dolls, the answers were specific: Tonette doll, miniature dolls, dolls from other countries, a bride doll with several outfits, a Ginny doll, and a Toni doll.

- Although two girls requested a piano plus one who requested a grand piano. They dreamed big!
- A few people wanted a puppy or a dog or a cat, with one specifying a LIVE cat, just to be clear to Santa.
- One boy’s favorite toy that he did NOT get was a Red Ryder BB Gun, because it might put out his eye or the eye of one of his friends. But he did get a BB pistol. Why that was acceptable and the BB rifle was not is something he never figured out.
- One girl’s was electric scissors shaped like a duck, and she even remembered that the duck’s bill formed the cutting blades.

Thank you to everyone who participated in rekindling holiday memories. I enjoy seeing you at each year’s fun and festive Holiday Party.

Bonnie Hopler, Chair



Photo by LLI/NOVA member, Dick Martin



LLI/NOVA Automation

By now, we hope that most of you have completed your online registration for the Spring semester classes. Registration opened Dec. 9 and will remain open until the end of the semester.

Here are a few reminders:

If you signed up for a class as **“wait-list,”** do not attend unless you are contacted by the class coordinator and told that you can participate.

If you **cannot attend** a class, contact the class coordinator or the LLI/NOVA Administrator and cancel promptly because there may be members who are on the wait-list who would like to attend.

If you are registered for a class, you will receive a reminder email four or five days prior to the class, but only prior to the first session for a multi-session class.

If **class information** (e.g., date, time, or location) **changes**, you will be contacted by email. Changes also are posted on the website in the News Alert box, on the Class Change page, and on the Class/Event calendar.

If you are registered for a **class that has a fee**, you are committing to attend that class and pay the fee. If you cannot attend the class, you still must pay the fee unless you notify the class coordinator at least four days prior to the class.

If you have a **problem** with online registration or have a question, contact us. You can send an email at admin@llinova.org or at webmaster@llinova.org. You also can contact us at the LLI HelpDesk by clicking on the LLI Website HelpDesk in the Quick Connect Box on the Home Page, or you can call our LLI office at 703-323-3746 and leave a message.

Do you have an interest in computer technology? Would you like to help maintain and manage the LLI/NOVA website? If so, contact us (see above) because the Automation Committee is looking for additional help. Only basic computer skills are required to start.

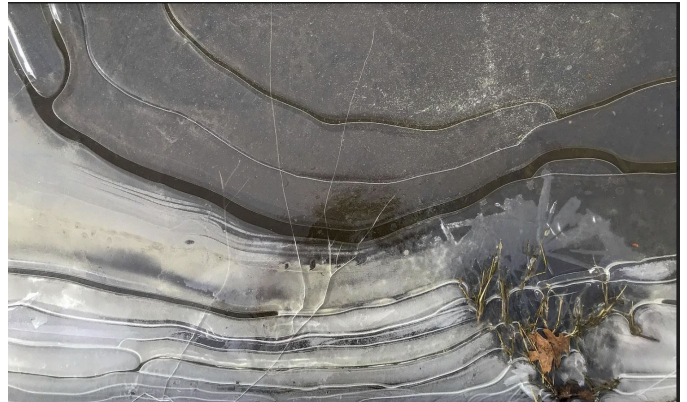


Photo by LLI/NOVA member Buck Myers

A “Class” Act

On behalf of the Curriculum Committee, we wish you happy holidays and a joyous new year. We hope you are enjoying the classes we offer.

We are still looking for a little help. We need a well-organized person to help schedule classrooms. If you like keeping track of moving parts, this is the job for you. Seriously, it requires close attention for only about two months prior to each term, and we provide tools to make the job easier. You are not responsible for every venue, so it's not as hard as it might at first seem. If you are interested, please contact Dick Robison at curriculum@llinova.org.

Regarding those evaluation forms you fill out, rest assured we actually look at them. If you think everything was excellent and have no comments, there's no need to fill out the form. However, if

you found anything that wasn't quite up to snuff, we want to hear about it. Some things are beyond our control. We can't provide cushier seats and we don't run the mowers, but we do want to hear about it if audio/visual elements are sub-par or you feel an instructor missed the mark. You can help yourself, too, by sitting up front if you have trouble seeing or hearing, We certainly appreciate your comments and suggestions for new classes. Keep up the good work!

One thing we've noticed is that with the on-line registration, we have fewer cancellations and no-shows. That's great, but we still have too many no-shows. If you can't make a class, please let the class coordinator know as early as possible so someone else can use your spot. Although we often have extra space available, some classes do fill up, so please be considerate of your classmates.



Bing Free Image

NEW MEMBERS

Welcome, New Members: We hope you will participate in our classes and volunteer your time and talent.

Sanna Osborne
Carol McManus

[At any time, if you have established a member ID and password, you can go to the Member Directory to search for contact information for a current member. At the website llinova.org click on the "Member Area" and then "Member Directory."]



Bing Free Image

Study/Travel

You still have the opportunity to join 27 other LLI/NOVA members (and friends and family) in about six months when we depart on our June 2020 river cruise, "Romance of the Rhine and Mosel." Detailed trip information, including how to register, is on the [Study/Travel](#) program page (click on the link). This would be a great last-minute holiday gift to yourself.

Meanwhile, we are working on our travel selection for 2021. Members on our mailing list have already made their choices from among the five candidate destinations, and we are analyzing the results. You can read about our selection status on our program page (see link above). If you would like to get early notifications and vote on our trips, join our email list by contacting Bob Hulley at studytravel@llinova.org.

If you are interested in getting involved with Study/Travel, join our committee. We need help to evaluate destinations and tours for future trips and to provide the study classes for our destinations. No experience required, just an interest in travel. Let Bob know if you are interested.



Special Interest Groups



Favorite Books Club

Thursday, Jan. 16, 11:30 a.m.-
1:00 p.m.

Braddock District Governmental Center
9020 Burke Lake Rd,
Supervisor's Meeting Room (behind Kings Park
Library)

Our selection this month is "The Handmaid's Tale," a dystopian novel by Margaret Atwood. The narrator, Offred, tells of her life in the monotheocracy of Gilead, in what used to be the United States, sometime in the near future. A totalitarian regime, it enforces rigid social roles, and has enslaved the few remaining fertile women. She is one of the Handmaids, kept to breed with "the Commander" and provide an heir. But she can remember what it was like before she lost even her own name. Despite the danger, she risks her life in breaking the rules in hopes of ending the oppression.

Questions? Contact Lynne Smaldone, Coordinator



Photo from Sakura Website

Foodies & Friends

Join us **Tuesday, Jan. 14**, at Sakura Japanese Steakhouse at 11:30 am. Guests can

choose either the hibachi grill section or the sushi dining area. Customer reviews applaud the quality and quantity of the food and the chefs' entertaining preparation of the meals on the grill, as well as the excellent service. Vegetarian, vegan and gluten-free dishes are offered. Sakura has received Trip Adviser's Certificate of Excellence for several years. Check out the menus on the restaurant's website, www.sakurasteakhouse.com.

The restaurant is located in Tysons at **8369 Leesburg Pike** in the Pike 7 Plaza near Starbucks and Panera (703-356-6444). There is plenty of free parking. Separate checks will be available. We anticipate that the majority of our group will choose the hibachi style menu. However, some of you may prefer sushi. When you RSVP, please indicate hibachi or sushi.

Please **RSVP** to your host, Cynthia Gronvall, at cdgronvall@yahoo.com or 734-657-7503 by Saturday, Jan. 11, to reserve your spot.



Bing Free Image

Mystery Books

The Mystery Book Club will meet Jan. 6, 2020, at Kim Rendelson's home located at 3401 Silver Maple Place, Annandale. The group meeting will be a social gathering to plan the mysteries we will discuss in 2020. Please call Kim at 703-204-0388 if you plan to come. We will begin at 10:00 a.m.



Bing Free Image

Tabletop Games

We had a lot of fun with "Mille Bornes" last month as one team seemed to attract the "high number of miles" cards while the other team cornered the "Go" cards. That made it very competitive and humorous.

Our next meeting -- Jan. 28 at 1:30 at Kings Park Library -- will be a repeat of "Labyrinth," a game of collecting five treasures within a maze that you can change for each turn. Part of the strategy is whether you choose to improve your path to the treasures or to block an opponent's path.

Our plans include playing "Trivia" in February and "Pandemic" in March. We welcome more members who may suggest a new game for us to learn and a greater variety from which to choose. Contact Mary Lu Bednarsky with any questions. [Click here](#) for Member Directory.