



Volume 24—Number 6

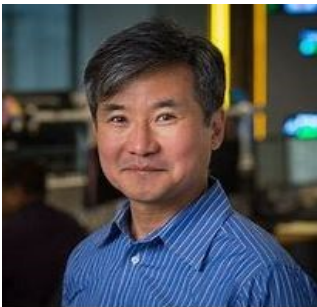
News & Views

June 2020

Wednesday, June 3, 9:50 a.m.

LLI/NOVA FORUM VIA ZOOM

(You will receive an email. Just click on the URL included.)



One of Northern Virginia's most popular economists will be discussing our economy in this very unsettling time.

NOVA professor John Min is well known and highly regarded for his mastery of complex financial and economic issues, and for presenting them in an entertaining and easily understandable manner. Join us via Zoom on June 3 at 9:50 a.m. All members will be sent an email reminder, agenda, and log-on logistics prior to this meeting. [Click here](#) for more information on using Zoom.

Dr. Min will discuss how cyclical fluctuations in revenue and spending have failed to improve income mobility in our country. He will note how the promised engine of upward mobility -- education -- has failed many due to increasing costs, especially for those starting out in low-income families. This structural inequality keeps the poor from improving their lives through educational and economic opportunities.

He also will speak about our expansionary stimulus fiscal policy during this coronavirus era.

Among his topics:

How is the nation's current stimulus package different due to easy migration of millennials to/from major urban centers?

Do current economic trends suggest that the amenities and economies of urban centers are fading in popularity with the millennials and seniors?

Does this mask the unequal distribution of income that persists across generations? Over the last 40 years, fewer Americans are making more than their parents did at the same age.

His presentation will keep us engaged and provide us with a lot to think about. We are fortunate to have this sought-after professor and industry expert during this period.

John Min is a full-time professor of economics at NOVA. He is the chief economist and managing director at Tempus, Inc. Dr. Min also teaches global finance training and investments at the New England Institute of Business. His doctorate in economics is from George Mason University, his MBA degree is from George Washington University, and his undergraduate degree is from the College of William and Mary.



President's Message

It is simply good just to be here.

There are so many things that are particularly good, but some not so much. This spring's cool and showery weather during our "stay in" social distancing period produced brilliant spring colors in our landscape with much less ozone. Yet the coronavirus pandemic seems unreal and makes one want to say, "Wake me when this dream is over!"

Considering all of this, it is a tad challenging and seemingly elitist to focus narrowly within LLI/NOVA when job losses, the pandemic, and other end-of-life challenges loom. Yet we are completing another program year, and we are positioned to launch a year of celebrating our silver anniversary . . . 25 years of learning and volunteering in our horizon years. By this time, the NOVA college students have become so familiar with our silver-hair presence that they no longer call us "professor" when approaching us for directions.

Our automation team has kept us operating 24/7 for almost 18 months without the slightest hiccup, including online class registration and trip sign-ups. We are one of the few mid/large-size LLIs that are comfortable with being 100 percent digital, including scholarship donations. These sturdy and robust capabilities are the outcomes of hundreds of volunteer hours and expertise, as well as smart, capable members who are embracing new learning tools and methods.

One of my pastimes is to peruse other mid-size LLI websites (there are about 400 nationally). I am both stunned and proud to notice that many LLI administrative managers/directors are bragging about the number of their members who

have been trained how to use Zoom. When we shifted to online training in April, other than a three-minute Zoom tutorial, many of us simply clicked the class URL and joined in. Curriculum Committee Chair Dick Robison generally provides a five-minute overview before the classes begin. Several of our recent online classes had 45-70 participants. On June 3, we will have our first online Forum featuring Dr. John Min.

Currently, we are planning for the worst and hoping for the best regarding our period of social distancing. Please review our summer classes and other events to stay engaged and connected.

Best, Anna

Community Outreach



Due to job losses and related fallout from the pandemic closures, food pantries everywhere are having record numbers of persons requesting help. Our collection at the June Forum was to have been for Our Lady Queen of Peace Church in Arlington. Donna and Jim Davis are the contacts for that.

You may be interested to know that WJLA recently featured that church food pantry in a news report. The pantry organizers have seen an increase of at least 125 percent in the number of families they serve (about 520 each Wednesday). "This is what hope looks like in a crisis," said reporter John Gonzalez.

Since we can't collect items directly for this food pantry, those who would like to contribute can send a check to Our Lady Queen of Peace Catholic Church, 2700 South 19th St., Arlington VA 22204. Write "food pantry" on memo line. You may also contact Sally Diaz-Wells at sdiazwells@olqpva.org.



PLEASE VOTE FOR LLI/NOVA BOARD CANDIDATES NOW

Usually, the LLI/NOVA business forum comprises, among other things, a review of our annual budget and a vote for the LLI/NOVA Board nominees. Due to Covid 19 social distancing requirements, this forum will be held by Zoom (details to follow).

However, some members felt that Zoom would not be the easiest means to carry out the vote on the board slate. Therefore, we are asking for your input by email.

Please review the candidates shown below (introduced in the May newsletter) and vote on the slate by sending an email to Richard Steelman, chairman of the Nominating Committee (richardsteelman@hotmail.com).

Please vote before June 1.

Officers: (1 year term)

Anna Dixon—President & 3 year Board term
Frederick (Fritz) Ernst—Vice President and 3 year Board term
Loren Brandman—Secretary
Richard (Rich) Davis—Treasurer & 3 year Board term

Board Members: (3 year term)

Eugenia Burkes
Natasha Mullin



Bing Free Image

Curriculum Committee News

On behalf of the Curriculum Committee, I hope you are well and learning to make the best of things during these unprecedented times. I am very pleased with the response and accolades regarding our shift to online learning thus far. We shifted from physical classroom delivery to distance learning within three weeks. Most of us “old dogs” have learned the new tricks and like the interaction it offers, even if it isn’t like being there. Kudos to those who have made the leap. For those of you yet to do so, give it a try — I think you will find it far less daunting than you expect.

Many of you have questions about future LLI/NOVA classes, so let’s take a look at the crystal ball and see what we can predict.

For summer term, we expect all of our classes will be presented online. Even if things open up before September, we are unlikely to have use of classrooms at our usual haunts, and we’re not sure we would be comfortable exposing our highly vulnerable members or instructors to unnecessary risks even if space is available. Should things change, we will let you know.

That said, we still want you to register for classes so we can monitor participation and plan appropriately should conditions change. Registration opens on May 18. Summer term begins on June 1.

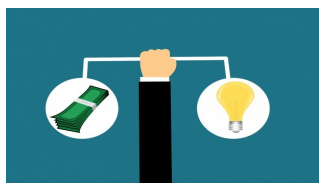
Looking ahead to the fall, we expect most early fall classes will be online. If it seems prudent, we will consider returning to classrooms as conditions warrant, but will probably present classes in a hybrid mode, both by in-person classes for those who prefer that venue and online classes for those who would feel uncomfortable in a physical environment.

We will attempt to schedule earliest the instructors who are comfortable with online teaching,

placing hybrid classes later in the term. During this period, we will need help from volunteers who can host classes on Zoom. If you can help, please let me know.

We have a plan that we think is flexible enough to adapt as conditions change. Please continue to propose classes and participate. We will get through this stronger than we were before, and certainly more technologically capable! [Click here](#) for contact information.

Dick Robison, Curriculum Chair



Bing Free Image

Budget & Finance Committee FY 2021 Budget

In compliance with LLI/NOVA's Bylaws, the Budget & Finance Committee is publishing LLI/NOVA's FY 2021 (July 1, 2020, to June 30, 2021) budget (see page 8) that was approved by the Board of Directors on May 8. The budget also will be presented at the June Annual Membership meeting.

Our primary source of income is member dues, and for FY 2021, we estimate 350 paid members during the year with the annual dues remaining at \$110. We also receive income from two planned social events, class fees for the Great Decisions class, and interest from investments, principally in Treasury Bills. Due to the Covid-19 pandemic, our membership is projected to be lower than prior years, but we expect this to improve during the year and to return to more normal levels in FY 2022.

Our expenses are conservatively estimated. However, FY 2021 includes a 25th Anniversary celebration for LLI/NOVA, and the Board has authorized extra one-time expenditures. Otherwise, FY 2021 reflects a steady state budget en-

vironment as we now have completed the website implementation project that automated many of our previously manual processes. We also have an ongoing affiliation agreement with NOVA that defines the support that LLI/NOVA receives from the college and the fees that we must pay to use facilities such as the Ernst Center Forum room for our monthly meetings.

As you will note, we project a deficit for FY 2021. This can be attributed mainly to the combination of reduced membership and the 25th Anniversary celebration expenditures. Because of very conservative financial management of LLI/NOVA funds during the past 25 years, we currently have sufficient net assets (i.e., savings, both in operations funds and an emergency fund) to offset this year's expected budget deficit. LLI/NOVA remains very healthy financially, but the real key to our continued organizational health is recruiting and retaining members.

If you have any questions about LLI/NOVA's FY 2021 budget, contact Bob Huley, Chair, Budget & Finance Committee ([click on the link](#) for contact information).

Just Who Is That LLI/NOVA Member?

Have you met someone in a class or Special Interest Group (SIG) that you'd like to get to know better or contact to ask a question or invite to do something? How can you reach that individual?

Well, assuming that when you met you introduced yourselves, you do have his/her name. Now what? Just visit the LLI/NOVA website (www.llinova.org) and log in to the website's Member Area; next, on the drop-down menu, click on the LLI/NOVA Member Directory. After you find the person you're looking for, check out their contact information and follow up to reach your new friend!

When you were scrolling through people's cards in the Member Directory, did you find a lot of white space on people's cards? Would you like to know more about your fellow LLI/NOVA members? Well, YOU can help with this and give our Member Directory more personality in the bargain!

Once you are logged in, click View or Edit My Account on the Member Area tab; then click on the Profile tab. Now upload your picture and tell us a little about yourself: what you did before you retired, what activities you enjoy, any special skills you have, and so forth.

LLI/NOVA is a community, and it's nice to get to know your "neighbors." So, please, hurry over to the LLI/NOVA website and add some local color!



If you don't groan at these, take your temperature. From Fatherly.com by Alicia Kort

How does NASA organize a party? They planet.

What do you call a pile of kittens? A meowntain.

Never criticize someone until you have walked a mile in their shoes. That way, when you criticize them, you'll be a mile away and you'll have their shoes.

Which rock group has four guys who can't sing or play instruments? Mount Rushmore.

What do you call a droid that takes the long way around? R2 detour.

Special Interest Groups

Mystery Books



The Mystery Book Club has been continuing our pursuit of reading and solving thrillers. This month we added viewing mystery movies for

our entertainment.

Recommended :

Three books by Harlan Coban made into movies entitled: "Safe," "The Five," and "Stranger."

Michael Connelly's "The Lincoln Lawyer" was fun.

Netflix has shows entitled "Broadchurch," and PBS has Perry Mason thrillers.

This has helped us to cope with the self-imposed quarantine. [Click here](#) for the SIG page and contact.



Bing Free Image

Tabletop Games

At our last in-person meeting in February, Charlotte Rosenfield won the Trivia Game. At the end of April we played Trivia by email and Ray Bednarsky won with 7 of 10 correct answers. We need to give Ray more competition. We plan to continue to play Trivia during the summer, hoping that we will be able to meet in person in September.

On June 23 we will email questions for the next bout of Trivia with a reply required by June 29. (No fair asking Google for help.) We will include the first 15 non-members of the SIG who email our coordinator, Mary Lu Bednarsky, between June 15 and June 20. [Click here](#) for contact information.

We are trying to brainstorm how to play a board game by Zoom, so if you have any good suggestions, please contact Mary Lu. In the meantime, stay well but keep playing.

Flag Day, June 14



Bing Free Image



In Memoriam

Merry Huley

Longtime LLI/NOVA member Merry Huley passed away on May 13 after a long battle with cancer. Merry joined LLI in 2003 and so enjoyed it that her husband Bob followed and joined in 2004. She had many varied interests including music, books, and art, but was particularly known as being a wonderful bridge player. She always supported Bob in arranging for the Bridge SIG schedule and at times filled in to complete a table even though she had other commitments.

Merry was also a very adventurous traveler. She taught with the DOD Overseas school program for two years in the Philippines and then transferred to Germany where she met Bob, an Army officer and helicopter pilot. Merry did a great deal behind the scenes in helping Bob with the LLI/NOVA trips he coordinated through the Study/Travel group, and they traveled extensively on land and sea and even by bike.

Merry was always willing to lend a helping hand. In preparation for one of the holiday luncheons, Merry invited the decorations committee to her house to work. Everyone was surprised to arrive and discover that Merry had baked muffins to share. To quote one of the committee members, "Merry was a most gracious hostess and just wanted everyone to feel at home."

Merry, who had her unique style of dress, was known as being an avid shopper and was more than happy to share her tips with fellow LLI/NOVA members. Whatever she was involved in was done with a smile and great enthusiasm. She also had a wonderful sense of humor along

with a strong faith and was very active in her church.

Grace Mayer

Former LLI/NOVA member Grace Mayer passed away on March 7 in Asheville, N.C. Grace was a graduate of Wilson Teachers College and went on to teach middle school. She ultimately had a career at the Central Intelligence Agency where she met her future husband, Alan E. Mayer, also an LLI/NOVA member.

Both Grace and Alan were very active in helping to organize LLI/NOVA during its formative years in the late 1990's. While Alan assumed several formal roles in LLI/NOVA such as president, vice president and class coordinator, Grace was always available to volunteer for activities such as the annual holiday luncheon and the summer picnic. She was instrumental in organizing a class on the Virginia legislature that included a trip to the State Capitol, where LLI/NOVA members met with legislators and observed committee meetings. Grace served as Alan's administrative assistant when he was a state delegate for 10 years during the late 1980s and early 1990s. Both Grace and Alan loved to travel and organized many trips for LLI/NOVA members.

Grace took on a variety of roles in local and state politics, served as a volunteer in the ESL program of Fairfax County Public Schools, and was active in the Lincolnia Park Civic Association. Together, she and Alan worked to improve the lives of all Virginians.



In Memoriam

Don Reynolds

Don Reynolds, an LLI/NOVA member for 16 years, passed away on May 1. Don, along with his wife Sally, participated in LLI/NOVA activities for many years. He was a member of the Board of Directors and served on the Curriculum Committee. Don made some very interesting presentations to LLI/NOVA, both at Forums and in classes, in which he shared his experiences from World War II. He was involved in the Normandy invasion in a staff communications position. In recent years, he made a trip to Normandy at which time he received honors along with other veterans.

Before moving to Northern Virginia, Don was a newspaper reporter in suburban New York City and had fond memories of reporting on the three major league teams there at the time: the Yankees, the Giants, and the Brooklyn Dodgers. He offered many LLI/NOVA classes on baseball, sharing his opinions about how the game had changed over the years. In particular, he could not understand why starting pitchers were seldom allowed to pitch an entire game.

Don also enjoyed writing poetry and participated for many years in Richard Risk's Poetry and You classes. He recited his latest poems at the annual poetry social.

Barbara Rolling

Barbara Rolling, Captain, U.S. Public Health Service (Ret.), died on April 12. She was a member of LLI/NOVA from 1997 to 2011 and served on the Board of Directors. As an accomplished bridge player, she was more than happy to join the bridge group. Barbara particularly enjoyed LLI/NOVA travel opportunities and the National Park Service classes.

Barbara attended Katharine Gibbs School in New York City and was a secretary in the president's office at Cornell University. In 1954, she attended the Columbia-Presbyterian School of Nursing and earned her BS and MA degrees. She entered the Public Health Service as a Nurse Officer and was assigned for most of her career to the Clinical Center, National Institutes of Health, and then the Bureau of Health Professions, both located in D.C. area. She received the PHS Meritorious Medal, Outstanding Service Medal, and Commendation Medal. After retiring in 1993, she served as a board member of the Northern Virginia Chapter of Military Officers Association of America.

Lifetime Learning Institute of Northern Virginia
Budget for Fiscal Year 2021

(1 July 2020 through 30 June 2021)

Income	
Membership Dues	\$38,500
Social Events	3,300
25 th Anniversary Luncheon	3,000
Class Fees	990
Interest	750
Total Revenue	
\$46,540	
Expenses	
Administrative Staff	\$19,280
Financial System	100
Furniture & Equipment/Service	400
Conferences/Retreats	300
Honoraria	900
Insurance	1400
Parking Reimbursement	100
Classroom Rent	2,000
Classroom Rent (Richard Risk Fund)	800
Ernst Center (forum/seminar rooms)	5,150
Office Supplies	1,100
Publications Design	200
Outside Printing	300
Postage/Mailing	250
Teaching Materials	1,300
Web Site Maintenance	850
Web Support – Follow On	2,000
Credit Card Expense	800
Refreshments	4,250
Miscellaneous	150
Operating Expenses	
\$41,630	
Other Expenses	
Social Events	\$4,200
25 th Anniversary Activities	6,100
Taxes and Fees	50
Total Expenses	
\$51,980	
Projected End of Year Balance	
(\$5,440)	

Approved by the Board of Directors on May 8, 2020