

## President's Message

Our April Forum program—video clips from Ken Burns' new documentary "The War," presented by WETA and attended by 155 members and guests, afforded us the opportunity to honor the World War II veterans who were present in the audience. Encourage your family members, including grandchildren, to watch "The War" on WETA TV in September. Don't miss seeing this vital part of our U.S. history.

Elections for LLI Board of Directors will be held during the June 5 business meeting. Many thanks go to Chairman Lorin Goodrich and the Nominating Committee for presenting the outstanding slate of candidates. Please be sure to vote for your officers and Board members on June 5.

This issue's summary and photos of the South America trip enjoyed by our intrepid travelers are but a sample of their journey. To learn more, go to our LLI web site <http://lli.nova.org> to find detailed articles submitted by two of the travelers, Bob Huley and Larry Mark, and photos by Merry Huley, Larry Mark, and Kathy Dennehy. If you have never checked out our web site, now is the perfect time to do so. Our thanks to LLI member and web master, Sid Sachs.

*Happy Spring!*

*Norma Hughes*

## Forum: Tuesday, May 1

### *The Role of American Labor in Enhancing Social Advancement in the U.S.*

Jack Otero, labor expert and president of an international labor consulting and linguistic services firm, will talk about the contributions made by U.S. organized labor in humanizing the workplace and securing decent wages and benefits not only for union members, but also for millions of non-union members. Please plan to attend our Forum meeting to hear Mr. Otero, a naturalized American citizen of Cuban extraction who has had a long distinguished career in the labor movement, including being the first U.S. Hispanic to be elected vice president of the national AFL-CIO.

The Forum room is located on the second level of the Ernst Cultural Center, NVCC-Annandale.

Coffee, tea, and refreshments will be served at 9:30 a.m. The meeting will begin promptly at 10:00 a.m. Parking is available in the garage at an hourly rate of \$1.00. Please enter at the lower level on Center Drive.



## Inside This Issue...

President's Message .....	1
Forum .....	1
Lunch Bunch .....	1
Calendar of Events .....	2
Great Decisions Materials Donated .....	2
Board of Directors/Staff .....	2
Annual Membership Meeting .....	2
Membership Update .....	2
Study Travel .....	2
Thank You! .....	2
Special Interest Groups .....	3
Curriculum Notes .....	3
Our LLI South American Odyssey .....	4
May Newsletter Deadline .....	4
Community Outreach .....	4
Postcards from South America .....	5
2007-2008 Slate of Candidates .....	6
LLI Scholarship Winners .....	6
LLI Scrapbook .....	7
Membership Renewal .....	7
Elections June 5 .....	8
May Activity Calendar .....	8

## Lunch Bunch

John Bogart [jebogart@juno.com](mailto:jebogart@juno.com)

We have lunch reservations at the **Mythos Restaurant** in Fairfax City following the May Forum. Mythos, a newly opened restaurant recommended by a member, features Greek and International foods at a moderate cost. Mythos is located at 9715 Fairfax Boulevard (aka: Route 50 and Arlington Boulevard). Phone: 703-385-2595.

**Directions:** From NOVA, turn left onto Route 236, turn right onto Prosperity Avenue, turn left onto Arlington Boulevard. Go a couple blocks beyond Fairfax Circle and Mythos is on the left before Harley-Davidson.

## Calendar of Events

<b>May</b>		19 Black History Tour of Washington, D. C.
1	Forum	
11	Board meeting	
11	June newsletter deadline	<b>August</b>
21	Newsletter mailing	3 Sept. newsletter deadline
22-25	<b>Trip:</b> Long Island Tour (Hamptons, Montauk Point, Sagamore Hill, Winery)	9 Embassy Tour-Russia, Sweden, and Indonesia
		13 Newsletter mailing
		28 Forum
<b>June</b>		<b>September</b>
5	Forum – Elections	7 Oct. newsletter deadline
8	Board meeting	14 Board meeting
13	<b>Trip:</b> Richmond (Lewis Ginter Gardens, Wilton Plantation Home, and Maggie Walker Home)	17 Newsletter mailing
30	Wayside Inn & play "Only Me" at Shenandoah Theatre	25-28 <b>Trip:</b> Plantations, Jamestown's 400 year anniversary, Wmsburg., and Yorktown
<b>July</b>		<b>Note:</b> Forum meetings are scheduled on the first Tuesday of the month except as indicated above. Board meetings are held on the second Friday of each
—	No Forum, no newsletter	
—	Board planning retreat	

## Great Decisions 2007 Materials to be Donated to NVCC Library

During the past few months, some 25 members have enjoyed participating in the annual Great Decisions series (Course 7W39P). The videos will be presented again during the Summer 2007 session after which they will be donated to the college library for use by faculty and students. It would be appreciated if any of the participants in the Winter/Spring 2007 course were to donate their books as well. These books will be used during the summer session. Lorin Goodrich will be glad to collect your books at the May 1 Forum, or you can give them to Laura Charron at the June 5 Forum. Many thanks!

### LLI Board of Directors

<b>President:</b> Norma Hughes	<b>Members:</b> Libby Burge 07*, Deanna deMember 09, Dick DiBuono 07, Burt Greenstein 07, Paul Hopler 08, Norma Hughes 09, Doug Johnson 09, Curt Kornblau 08, Betty Mahon 07, Liddell McLeod 07, Don Reynolds 09, Phil Runge 08, Gina Trapp 09, Mary Underwood 08
<b>Vice President:</b> Dick DiBuono	
<b>Secretary:</b> Gina Trapp	
<b>Treasurer:</b> Phil Runge	
<b>Assistant Treasurer:</b> Warren Hynes	
<b>Past President:</b> Lorin Goodrich	
<b>President Emeritus:</b> J. Knox Singleton	

\* year term ends

**Administrator:** Laura Charron

### Newsletter Staff

**Newsletter Editor:** Norma Jean Reck 703-938-4612 njreck@cs.com  
**Graphic Design/Desktop Publisher:** Alfred Brothers  
**Mailing Coordinator:** Colletta Hammond

© Lifetime Learning Institute 2007

## Annual Membership Meeting Is June 5

According to our bylaws, a membership meeting must be held annually with a notice to all members at least 30 days in advance. This year's annual meeting will be held on Tuesday, June 5, in the Forum Room of the Ernst Cultural Center, NVCC-Annandale following the Forum. Election of officers and members of the Board of Directors at large will be conducted. We need at least 35 members in good standing to constitute a quorum. Note: See article on the Nominating Committee's slate of candidates.

## Membership Update

Martha Siemering 703-569-2450

*Welcome! We hope you will participate in our classes and volunteer your time and talent.*

**Giovanna Prestigiacomo** 10310 Luria Commons Ct., Apt. 2C, Burke, VA 22015; (H) 703-425-4465 (C) 703-463-8978 gprestig@cox.net

**Carole Sergio** 5213 Dunleigh, Drive Burke, VA 22015; 703-323-6159 caroleeveny@lycos.com

### Corrections

**Beav Bassett:** E-mail — bassett2@aol.com

**Linda Rose** 6708 Norview Court Springfield, VA 22152; 703-644-2982 linda-rosa@yahoo.com

## Study Travel

Doug Johnson

We are now learning about Ireland. In our first session, a video of Ireland gave us an overall impression of Ireland. Our second session will feature Jack Boyle, a retired Foreign Service Officer who spent several years in our embassy in Ireland and Bev Portman who will talk about her recent trip there. For our third session, Burt Greenstein will lecture on Irish History.

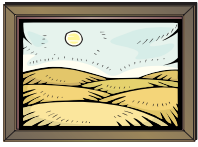
A new program Travelogue, scheduled for August, will be in the summer catalogue. The two sessions will feature first our South American trip and second our trip to Ireland.

## Thank You!

Thanks to our LLI friends for your prayers, cards, emails, and phone calls during the past months regarding our micro-preemie twin grandchildren. The babies will be one-year-old in mid-June. Jordan came home from the hospital after four months and is a miracle, as he progresses and grows; a joy to us all. Geneva remains in the NICU with many health issues and is hopefully due to come home soon. Although her long-term prognosis remains uncertain, we are hopeful that she will have a long and healthy life. Again, thank you for your concern and support. They mean a great deal to our entire family.

# Special Interest Groups

## Arts & Smarts



**Donna Trogler 73 751-8932 or DTrogler@aol.com**

All tours, except the Johns exhibition, are docent-led. Lunch is optional either before or after the tours.

April 27: We go to the Lunder Conservation Center at the Reynolds Center. Please be at the G Street entrance by 1:15 p.m. Our tour starts at 1:30.

May 18: We visit French Impressionist, Eugene Boudin, at the National Gallery of Art. This exhibition is in honor of the centenary birth of Gallery benefactor Paul Mellon. It includes 40 paintings and works on paper, which feature a number of the small-scale paintings of tourists at fashionable Normandy resorts for which Boudin is famous. We want to alert you to the Jasper Johns: An Allegory of Painting, also being shown at National Gallery of Art. It has 80 objects that include some of the artist's most important paints, drawings, and prints.

June: The Museum of the American Indian is the agenda. More details at the May Forum.

July 20: We visit the Phillips Art Gallery. More information will be forthcoming.

## Bridge Group



**Bob and Gladys Bucklew 703-631-7889**

We will meet May 9 and 23, i.e., the second and fourth Wednesdays, at the Mason District Government Center from 10 a.m. to 2 p.m. Bring a bag lunch. Please call Bob or Gladys

Bucklew about date(s) you wish to attend to afford us the opportunity to obtain sufficient card tables for attendees. All are welcome. Note that if there are "extra" people, Bridge play is rotated (four hands per game) among all present. Also, most of our players are "singles," so you do not need a partner to attend. We hope you can join us!

## Curriculum Notes on LLI's Shakespeare Festival

**Virginia Fernbach 703-751-8369**

*Rosencrantz and Guildenstern Are Dead*  
A play inspired by Shakespeare's Hamlet

On Tuesday, May 15, the class will meet to learn more about *Rosencrantz and Guildenstern Are Dead*, the last play in this year's LLI Shakespeare Festival. This pre-performance discussion will enhance your understanding and enjoyment of seeing the play Sunday, June 10 at 2 p.m. If you have already signed up for the class, this is a reminder that we will meet at 10 a.m. at the Beatley Regional Library in Alexandria. If you have not signed up and are interested in learning more about the play (and in attending it), we invite you to join us as space is available. We'll go to the Studio Theatre at 501 14<sup>th</sup> St. (between P & Q Streets) N.W., Washington, D.C. Cost of a ticket is \$38. Ticket orders are being taken. Directions to Studio Theatre will be provided in the June *News & Views*. As we approach June 10, I will either e-mail you or phone you (if you don't have email) and let you know who is planning to attend, so you can car pool if you wish.

Questions? Call Virginia Fernbach.

## LLI Current Events Group



**Shirley Lotz 703-978-2977 svlotz@cox.net**

**Date:** Friday, 4 May 2007

**Place:** Mason District Governmental Center

**Time:** 10 a.m. to 11:30 a.m.

**Topic:** National Election Issues?

What are the national issues that you think will be important in the 2008 election?

How do you rank these issues? We want to focus on these issues in our future current events meetings before the 2008 primary season starts.

Come if you want to share your ideas or learn more about current events. We want to give all who wish a chance to speak. After an hour, we choose the next topic. Then we have open discussion on current events of interest to anyone. We meet in the Small Conference Room at George Mason District Government Center.

## Favorite Books Club



**Arlene Gribben 703-569-0357 arlenegribb@aol.com**

On Thursday, May 17, the book club members will discuss one of Fannie Flagg's early books: *Fried Green Tomatoes at the Whistle Stop*

*Café*. It's the story of an elderly woman in the 1980s telling her life story to a younger woman. The tale she tells is of two women—a dare devilish tomboy and her friend, who in the 1930s ran a little Southern kind of cafe, offering good food, love, laughter, and even an occasional murder. The meeting will be held at the Mason District Governmental Center, 6507 Columbia Pike, Annandale, from 11:30 a.m. to 1:00 p.m.

## Gourmands



**Mary Underwood and Sarah Bell Kathy Dennehy 703-938-3012**

**Place:** Marco Polo

**Date:** Wednesday, May 16, 2007

**Time:** 12:00 Noon

**Address:** 245 Maple Avenue, West, Vienna, VA 22180

**Choice of:**

1. Luncheon Buffet: Soup, Hot and cold items
2. Manicotti w/cheese & spinach
3. Chicken Cordon Bleu

**All choices include:** Salad, coffee, tea, and dessert (peach melba)

**Cost:** \$21.70, includes tax & tip. Note your lunch choice, from the three items listed above, on your check. Send check to: Kathy Dennehy at 9115 Brian Drive in Vienna, VA 22180.

## Walkabouts



**Liddell McLeod liddell\_mcl@cox.net**

Join the LLI Walkabouts at noon on the following Thursdays: April 5 and 19, and May 3, 17, and 31. To receive email updates and reminders, and to participate in location planning, please send your email address to Liddell.

# Our LLI South American Odyssey

**Editor's Note:** Please go to <http://lli.nova.org> to read the complete articles by Bob Huley and Larry Mark and to view more photographs by Merry Huley and Larry Mark.

**T**he fabled Inca "Lost City" of Machu Picchu stretched before us in the bright sunlight. Perched on an 8,500-foot high ridgeline between two peaks that jut into a Peruvian cloud forest, and invisible from the narrow Urubamba River valley floor almost 2,000 feet below, it had lain hidden for centuries. Constructed in the 1400s exclusively for Inca royalty and the priests, they abandoned it to the jungle about 100 years later when the Spanish *conquistadores* marched through South America. In 1911, quite by accident, Hiram Bingham, a Yale archaeologist, rediscovered it. The as yet unsolved mystery of Machu Picchu is: How did the Incan artisans erect the spectacular stone buildings, walls, etc., with precision-fitted stones, some of which weigh tons, without the benefit of iron tools or cutting implements or the wheel? This feat is even more astounding considering that, as Doug Johnson observed, "The only level areas were the crop-growing terraces. Everything else was either up or down steep, uneven steps of stone, with no handrails."

Before taking a 4-hour Vista Dome train ride and a bus ride straight up the side of a mountain on a one lane, dirt road with 14 switchbacks to Machu Picchu, we visited Cuzco and Aguas Calientes. Cuzco, the gateway to Machu Picchu, is picture-postcard Peruvian, with women and children dressed in native costumes, and llamas. The challenge of visiting Cuzco is the altitude, which, at 11,500 feet, takes your breath away—literally. Once acclimated, the Pisco Sours, the Peruvian national drink, made the stay more enjoyable. Aguas Calientes is a quaint, rustic town whose sole business is Machu Picchu tourism.

Our pre-trip extension over, we six LLI'ers flew to Santiago, Chile, to join the other 23 LLI members. We arrived just in time for the welcome dinner. The next day, our tour included a 360-degree view of the modern city from San Cristobal Hill and a visit to a Pre-Columbian museum. Unhappily, Curt Kornblau had an unfortunate fall that got him Medivaced home—first class.

Next stop: Puerto Montt, a port city, where we visited the fish market and bargained with the street vendors for bracelets and souvenirs. On to Puerto Varas to spend the night on Lake Llanquihue with its magnificent view of the Osorno Volcano. On the fifth day, our odyssey included four bus rides, three boat trips, crossing from Chile into Argentina, passing through the Nahuel Huapi National Park, and arriving at Bariloche, a picturesque year-round ski resort on the shores of Lake Nahuel Huapi. On a walking tour, we discovered the Patagonia Museum and intriguing chocolate shops. One evening, Alberto, owner of El Boliche de Alberto, personally prepared a table-side grilled dinner for us. According to Bob Huley, "the servings were gargantuan and the beef was the best we had on the trip!"

We then flew to Buenos Aires, Argentina's cosmopolitan capital where we shopped and sampled the cuisine. On a one-day side trip to an Argentine ranch, we feasted on a barbecue lunch prepared by the ranch hands. We were treated to a horse show put on by the gauchos and other entertainment.

The high point of the trip for many was the visit to the Iguassu Falls, one of the greatest natural wonders of the world. A few of us took a helicopter ride to better view the spectacular Falls, which consist of a three-mile-wide series of falls, located between Argentina and Brazil.

The grand finale was Rio de Janeiro, Brazil, where our hotel was right on the famous Copacabana Beach. We rode a cable car up Sugar Loaf Mountain and a cog train up Corcovado Mountain, which is crowned by the landmark Christ the Redeemer statue. From 2,500 feet above sea level, the views were spectacular. Also enjoyable was the Brazilian national drink, Caipirinha. We serenaded Norma Hughes and Mary Mark on their birthdays. Norma Fisher later provided them with a birthday cake at our farewell dinner.

Too soon coming, our farewell dinner featured a traditional churrascaria with a lavish salad bar and a variety of marinated meats barbecued Brazilian style, carved and served at our table. No trip to Brazil is complete without shopping for gemstones. The ladies shopped; some even bought. The shopping ended only when the bus left the hotel to take us to the airport for the long trip back home. We left the South American summer behind, but brought home beautiful memories shared with wonderful travel companions.

**Deadline for June newsletter  
input: Friday, May 11.**

## Community Outreach

**Salli Wise and Mary Ellen Firor**

Following the May 1 Forum, Bev Portman will deliver LLI donations to Food for Others, which distributes food throughout Northern Virginia in three ways: (1) Emergency food is provided at the warehouse to families and individuals referred by social services organizations; (2) Every weeknight, 14 sites in high-poverty neighborhoods in Arlington, Falls Church, and Fairfax receive supplementary food distributions; (3) Throughout the year, bulk food distributions are provided to more than 40 community-based organizations, including churches, soup kitchens, homeless shelters, and community centers. Currently, they especially need peanut butter, jelly/jams, 1 or 2 lb. bags of rice, flour, sugar, fruit, vegetables, pasta sauces, and macaroni and cheese.

# Postcards from South America



Group foto in front of Sugarloaf in Rio de Janeiro, Brazil. Back row – l. to r.: Louise Blakely, Norma Hughes, Doug Johnson, Bob Huley, Carolyn Blackwood, Terry Brittain, Mike Lusick, Larry Mark, Lorin Goodrich. Front row – l. to r.: Elaine Riccio, Anne Austin, Leona Johnson, Norma Fisher, Lynda Brittain, Doreen Lusick, Mary Mark, Leah Porzel, Janet Goodrich, Kathy Dennehy. Kneeling – l. to r.: Merry Huley, Margaret Rowell. Not pictured: Curt Kornblau, Bev Portman.



Vendor in Puerto Montt, Chile, where we got 20-cent wooden bead bracelets.



Bob, Merry Huley in Machu Picchu, Peru



View of Iguassu Falls from helicopter



Gaucha scene on ranch outside Buenos Aires, Argentina

# Slate of Candidates for 2007-2008 Elections

The Nominating Committee announces its slate of candidates for election of officers and Board of Directors at LLI's June 5, 2007, annual membership meeting. Additional nominations will be accepted from the floor. Committee members are Chair Lorin Goodrich, Libby Burge, Deanna DeMember, Colletta Hammond, and Richard Risk.

*President and a three-year term:* **Dick DiBuono** — A member of LLI for many years, Dick currently serves as vice president, chairman of both the Budget and Finance and the Administrative Review committees. His past involvement has included serving on the Curriculum Committee, the 10<sup>th</sup> Anniversary Celebration Committee, and coordinator for several courses. A civil engineer by profession, Dick's other activities include golfing, genealogy, gardening, and travel.

*Vice President:* **Curt Kornblau** — Currently a member of the Board, Curt chairs the Strategic Planning Committee and serves on the Budget and Finance Committee and the Curriculum Committee. Curt also coordinates several LLI courses. He served in the Army during WW II and the Office of Strategic Services. He ultimately retired as an association executive in the food industry. Curt was born in Vienna, Austria, and now lives in Vienna, Virginia.

*Secretary:* **Gina Trapp** — Gina joined LLI in November 2004 and, shortly thereafter, became very active in a number of LLI projects and activities. She continues to assist in many ways, including currently serving as secretary and as a member of the Curriculum Committee. Gina retired in September 2004 after 30 years at the U.S. Department of Housing and Urban Development. She has an avid interest in animals and enjoys travel and theater.

*Treasurer:* **Phil Runge** — Phil assumed the treasurer's position in February 2005 after the previous treasurer moved from the area. Besides handling this demanding assignment, Phil has been an instructor for LLI courses in computers, digital photography, and eBay. Phil worked for a trade association and tutored at the university level in mathematics and science.

*Board Member (one-year term):* **Libby Burge** — Libby completes her three-year term on the Board in June and has agreed to be a candidate to serve as a Director for an additional year by filling a vacant unexpired term. A member of LLI for seven years, Libby has served in many capacities, including secretary and mailing coordinator. She is currently the Volunteer Coordinator. Libby retired from Fairfax County Juvenile Court in 2002. She enjoys good books, classical music, and ballroom dancing.

*Board Member (three-year term):* **Bob Huley** — Bob retired from the U.S. Office of Personnel Management as the Deputy Chief Information Officer in January 2004, and joined LLI shortly thereafter. He and his wife Merry, who retired from the Fairfax County school system in 2003, have been very active in the LLI study/travel program, local trips, several LLI classes, LLI Bridge Group, and the Walkabouts. Bob recently served on the 10<sup>th</sup> Anniversary Celebration Committee. The Huleys enjoy exercise and are avid bicyclists.

*Board Member (three-year term):* **Liddell McLeod** — Upon joining LLI in May 2004, Liddell became newsletter editor and served in that capacity until earlier this year. She will

complete a three-year term on the Board and is a candidate to serve another three-year term. She has worked on a membership study group and the 10<sup>th</sup> Anniversary Celebration Committee. Liddell leads the LLI Walkabouts and is very active in the poetry classes along with the annual Valentine's Day poetry event. Following her career in information technology at the Federal Reserve Board of Governors, Liddell has volunteered at Fairfax Hospital's new baby unit, and with Hexagon, a group that raises money for charity by performing political satire.

*Board Member (three-year term):* **Marianne Moerman** — Since joining LLI four years ago, Marianne has been stimulated by the many classes and programs LLI offers and has enjoyed the opportunity to make new and interesting friends. She has assisted on several committees for special LLI functions. Since retiring in 1997, Marianne has been very involved as a volunteer with the homeless, WETA, and at many theaters. She enjoys the Washington-area cultural opportunities, as well as reading, the outdoors, and visiting her three children.

*Board Member (three-year term):* **Barry Newman** — After joining LLI two years ago, Barry started helping with the arrangements for the Forum meetings and then joined the Curriculum Committee, including serving as class coordinator. Barry's career has been in employee training and development with many private and public sector employers. He retired from the Department of Homeland Security. Barry is a part-time consultant and enjoys tennis, senior softball, as well as volunteering with community civic groups.

## LLI Scholarship Winners

Chairperson Doris Balinsky, Leah Porzel, Marianne Moerman, and Deanna DeMember, the LLI Scholarship committee members, met with NVCC representatives Maria Nieto-Shahsavaraian and Dietrich Giles from the Medical Education campus and Dr. Bruce Mann from the Annandale campus on April 6 to interview the top 10 applicants for the LLI Leadership and Academic scholarships. These fine young people impressed us with their dedication, involvement in campus and community activities, as well as high scholarly achievements. The winners were: leadership scholarship (\$2,000) Atanaska Dobreva from Bulgaria, majoring in business administration and (\$1,000) Nora Sayasithsena, majoring in Dental Hygiene. Winners of the academic scholarships were Sara Nourian (\$2,000), business administration, and Kathryn Rohr (\$2,000), Dental Hygiene. The second place academic scholarships (\$1,000 each) will be awarded to Sung Ae Lee, a respiratory therapy student from South Korea, and Michelle Kouagnia Mbakop, an engineering major from Cameroon. The winners will receive their checks and certificates at the June 5 Forum, giving LLI members a chance to meet these impressive young people, whose further studies are aided by LLI members' generosity in making these scholarships possible. Thank you, LLI members!

# From the LLI Scrapbook...



*LLI web master Sid Sachs working on LLI website.*



*Jeanne Nilsen, Betty Yeary, Mary Underwood, and Arline Sachs playing bridge.*



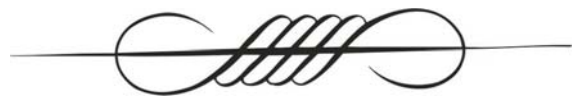
*Nominating Committee: Chairman Lorin Goodrich, Libby Burge, Colletta Hammond, and Richard Risk. Not pictured is Deanna DeMember.*



*WETA presenters Karen Kenton and Pat Callahan with those WWII vets present at April Forum.*



*President Norma Hughes addresses April Forum.*

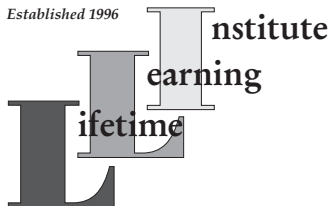


## Membership Renewal Reminder

Please check the mailing label on this newsletter for your membership renewal date. You must renew in order to register for courses and to participate in LLI's many other activities. Please complete the form in the Winter/Spring 2007 course catalogue and mail it to the LLI office with a check in the amount of \$110 for each person wishing to continue with LLI.



Established 1996



# Lifetime Learning Institute of Northern Virginia

c/o NVCC Continuing Education  
8333 Little River Turnpike  
Annandale, Virginia 22003  
Phone (703) 503-0600 / FAX (703) 503-5350  
E-Mail: [llinova@juno.com](mailto:llinova@juno.com)  
Website: <http://lli.nova.org>

NON-PROFIT ORG.  
U.S. POSTAGE  
**PAID**  
Permit No. 2192  
Merrifield, VA


Look at the date on this label.  
Is it time to send your dues?

**Time Sensitive Material  
Please Deliver by  
April 25, 2007**

# May

# 2007

**Sun. Mon. Tues. Wed. Thurs. Fri. Sat.**

		<b>1</b> Forum, Lunch Bunch	<b>2</b>	<b>3</b> Walkabouts	<b>4</b>	<b>5</b>
<b>6</b>	<b>7</b>	<b>8</b>	<b>9</b> Bridge	<b>10</b>	<b>11</b> Board Meeting, June Newsletter Deadline	<b>12</b>
<b>13</b>	<b>14</b>	<b>15</b>	<b>16</b> Gourmands	<b>17</b> Favorite Books, Walkabouts	<b>18</b> Arts & Smarts: National Gallery of Art	<b>19</b>
<b>20</b>	<b>21</b> Newsletter Mailing	<b>22</b> New York Trip: Long	<b>23</b> Island Tour Bridge	<b>24</b>	<b>25</b>	<b>26</b>
<b>27</b>	<b>28</b>	<b>29</b>	<b>30</b>	<b>31</b> Walkabouts	 <b>June 2007</b> June 5: Elections — Be Sure to Vote	