

Liz Crenshaw Speaks at the Next Forum

Tuesday, March 4, 2008 10:00 a.m.
Social Hour Starts at 9:30 a.m.

Consumer affairs and product safety are major issues in the news. Increasingly we hear disturbing reports about lead paint in toys, mortgage fraud, undocumented health miracles, widespread scams, revelations about some nonprofit charities, and criticism of U.S. Regulatory Agencies.

Liz Crenshaw has been the on-air consumer reporter for NBC, Channel 4 (*News4*) since 1993, and, obviously, she is very well known to TV viewers in our area. She has won four Emmy Awards as well as a coveted National Ohio State Award. Special segments on her programs include *Tricks of the Trade*, *Does It Really Do That?*, and *Ask Liz*. These special segments are especially creative and they paint a picture of “Liz” in many of our minds that is hard to forget. When you see and hear her in person you will want to be prepared to *Ask Liz* all those questions on consumer matters that have been troubling you for years.

Please Note: *Parking is in the pay parking garage. Parking in the B and C lots is by permit only; unauthorized vehicles are subject to being towed.*

Lunch Bunch

John Bogart bogartje@cox.net

After the March Forum, luncheon reservations have been made at **Kilroy's Restaurant** located at 5250 Port Royal Rd. #A, Springfield, VA, in the Ravensworth Shopping Center. Phone 703-321-7733. The restaurant features moderately priced foods.

Directions: Exit the college parking garage, turn right; turn left onto Wakefield Chapel Rd. to Braddock Rd. Turn left onto Braddock Rd. and right onto Port Royal Rd. (just before the exit to Capital Beltway). On Port Royal Rd. enter the shopping center on the right. Look for the Kilroy sign. Our meeting will be in a private room at the rear of the restaurant.

Farewell to Curt Kornblau

Curt Kornblau, longtime active member of LLI, soon will be moving to a new home in Fort Collins, Colorado. The move will put Curt closer to his children who live in that city. Curt joined LLI back in 2000 and almost immediately became involved in the Curriculum Committee when Doris Balinsky was the chair. He since has coordinated many of our courses, including those taught by Professor Tom Hardy, Carl Steiner, and Keith Tomlinson. He has been a member of the Board of Directors for the past six years and held the office of Vice President this year. Always ready to accept volunteer positions, which are vital to the success of our Institute, Curt has served as member and recently as Chair of the Budget and Finance Committee and was the prime author of LLI's current Strategic Plan, which guides the Board of Directors in its annual development of our Institute's activities and goals. We will miss his friendship, his tireless efforts and his wise counsel and we wish him good health and happiness in his new home.

Notice: Changes in Course Dates

Course 8W43 (History Presentations by NVCC Faculty): Professor Mary Zimmerman's discussion about “Women in Myth and Fairy Tale” has been rescheduled from May 13 to Monday, April 7, 1:30-3:00 p.m., Seminar Rooms C & D.

Study/Travel: One of the three dates for the upcoming Study/Travel Program has changed, so please mark your calendars. Instead of meeting on Wednesday, April 16, we will meet on Wednesday, April 30. The April 2 and 9 dates remain unchanged. The sessions will take place from 1:30 p.m. to 3:00 p.m., at the Mason District Governmental Center (Main Community Room) on Columbia Pike. During these sessions, we'll talk about the many sites we'll see and things we'll do on our upcoming trip to Alaska. This trip, which includes a 7-day Inside Passage cruise and 7-day land trip thru Kenai Fiord, Anchorage, Denali Park, Mt. McKinley, and Fairbanks, departs from Vancouver, BC, on June 8, 2008. There are pre- and post-trip options. Contact Doug Johnson at (703) 628-3115 or LLIDoug@yahoo.com.

Calendar of Events



March 2008

- 4 Forum (Tues.)
- 7 Apr. newsletter deadline *
- 14 Board meeting
- 17 Newsletter mailing

* date precedes board meeting by one week.

April 2008

- 1 Forum (Tues.)
- 4 Trip: Marine Corps Museum
- 11 Board meeting
- 11 May newsletter deadline
- 21 Newsletter mailing

May 2008

- 6 Forum (Tues.)
- 9 Board meeting
- 9 June newsletter deadline
- 13-16 Trip: Lancaster, PA Dutch Country
- 19 Newsletter mailing

June 2008

- 2 Forum (Mon.)
- 5 Trip: Frederick County, MD; Monocacy Aqueduct, covered bridges & Catocin Iron Furnace
- 13 Board meeting

July 2008

- No Forum, no newsletter
- Board planning retreat

August 2008

- 7 Sept. newsletter deadline
- 18 Newsletter mailing

September 2008

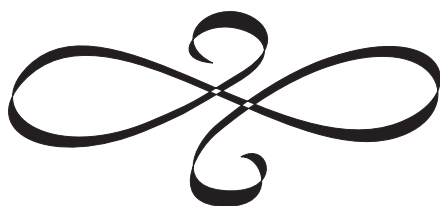
- 2 Forum (Tues.)
- 12 Board meeting
- 12 Oct. newsletter deadline
- 22 Newsletter mailing
- 23-25 Trip: New York City

October 2008

- 7 Forum (Tues.)
- 10 Board meeting
- 10 Nov. newsletter deadline
- 20 Newsletter mailing

November 2008

- 5 Forum (Wed.)
- 14 Board meeting
- 14 Dec. newsletter deadline
- 24 Newsletter mailing



LLI Board of Directors

President: Dick DiBuono
Vice President: Curt Kornblau
Secretary: Gina Trapp
Treasurer: Phil Runge
Assistant Treasurer: Warren Hynes
Past President: Norma Hughes

Members: Libby Burge 08*,
Deanna deMember 09, Dick DiBuono 10, Paul Hopley 08, Norma Hughes 09, Bob Huley 10, Doug Johnson 09, Curt Kornblau 08, Liddell McLeod 10, Marianne Moerman 10, Barry Newman 10, Don Reynolds 09, Phil Runge 08, Gina Trapp 09, Mary Underwood 08

* year term ends

Administrator: Laura Charron

Newsletter Staff

Newsletter Co-Editors: Norma Hughes 703-960-6279 nah.home@verizon.net and Lynda Brittain 703-425-8240 brittains@cox.net

Graphic Design/Desktop Publisher: Alfred Brothers

Mailing Coordinators: Colletta Hammond and Kathy Hall

© Lifetime Learning Institute 2008

Members

Martha Siemering 703-569-2450
martsiem@cox.net

Welcome, New Members! We hope you will participate in our classes and volunteer your time and talent.

Barbara Adams, 7820 Penley Place, Springfield, VA 22151, 703-321-8980, cadams111@cox.net

Catherine C. Baker, 6616 Madison McLean Dr., McLean, VA 22101, 703-821-2569

Suzanne B. Coster, 4510 Village Dr., Fairfax, VA 22030-5622, 703-591-5990

Marianne Galloway, 5904 Kingsford Rd. #D, Springfield, VA 22152-1129, 703-965-0817, jgalloway@bulletinEWS.com

Mary Gauthier, 5505 Seminary Rd. #2205-N, Falls Church, VA 22041, 703-931-8692

Mac M. Goetz, 8350 Greensboro Dr., #408, McLean, VA 22102, 703-749-5301

Diane M. Hall, 10511 Adel Rd., Oakton, VA 22124, 703-281-5308, dmhall47@cox.net

Patricia M. Uhler, 5645 Ravenel Ln., Springfield, VA 22151-2427, 703-321-4997, eku.jr@juno.com

Edward Uhler, 5645 Ravenel Ln., Springfield, VA 22151-2417, 703-321-4997, eku.jr@juno.com

Updates

Frances T. Chandler,
francest.chandler@gmail.com

Margarita Capetillo, 1812 N. Quincy St., Arlington, VA 22207, 703-243-1208

Octavio Capetillo, 1812 N. Quincy St., Arlington, VA 22207, 703-243-1208, ocapetillo20@verizon.net

Janet Yance, JPY1832@comcast.net



President's Corner

The 150 members who attended the February 5 Forum meeting heard Kathleen Styles of the U.S. Census Bureau tell about the extensive preparations being made for the 2010 decennial census. Pleasantly surprising to learn was the fact that there will be no long form; every household will receive a short form containing only eight questions. Also surprising is the fact that there will be no question about citizenship status. Speaking about Forum meetings, you always can find information about the upcoming one in this newsletter and on the LLI website (<http://lli.nova>). In the way of news you will find an article in this newsletter about our vice president Curt Kornblau's impending move to Colorado. Curt has tendered his resignation. We will miss him and his service to our Institute. At its February 11 meeting the Board of Directors elected board member Bob Huley to fill the post vacated by Curt. Bob will serve until the membership votes in the annual election of officers and Board members at the June 2 Forum meeting. Speaking of elections, Norma Hughes and her nominating committee are busy developing a slate of candidates to fill officer positions and the vacancies on the Board of Directors for the 2008-09 operating year, which begins on July 1. They will present a slate of nominees to the Board of Directors in March. Finally, our Curriculum Committee is working on preparing the program of courses for the summer term. If you have an idea for a course I encourage you to contact committee chairman Paul Hopley or one of the committee members.

Dick DiBuono

LLI's Leah Porzel Honored on Her 90th Birthday

We knew it was going to be a delightful afternoon, when we were greeted at Leah's front door by a little guy wearing a big smile and a name tag that stated, "I am grandchild # 22." So began the celebration of Leah's 90th birthday with a houseful of family, friends, and lots of food. Leah's family of seven children, twenty-two grandchildren and nine great grandchildren hosted the memorable party to celebrate the years Leah has graced the earth.

Mid-afternoon, the large group gathered into the living room for a personal presentation by the Mayor of Falls Church, Robin Gardner. The presentation was a Proclamation declaring February 2, 2008 in the City of Falls Church as *Leah Porzel Day*. The Mayor read the official proclamation, which cited Leah's countless volunteer activities during her forty-four years as a resident of Falls Church including many numerous City projects, such as establishment of Aurora House for Girls 15 years ago, where she continues to serve on the board, and serving as a docent at Cherry Hill Farm, to name just

Continued on page 5

Community Outreach Food Program

Betty Lee Thatcher 703-354-8154
Carol Weber, caroljeanweber@hotmail.com

Food for Others is the designated recipient of the LLI food donations at the March 4 Forum. As a regional food distribution organization, Food for Others distributes food throughout Northern Virginia in three ways: at their warehouse, emergency food is provided daily to an average of 60 families and individuals referred by social services organizations; every weeknight, food is distributed at 14 sites in high poverty neighborhoods in Arlington, Falls Church and Fairfax; and throughout the year, bulk food distributions are provided to more than 40 community-based organizations, including churches, soup kitchens, homeless shelters and day care and community centers. Especially needed at this time are macaroni and cheese, canned chili, jellies or preserves, canned fruit, rice or rice products such as Rice-A-Roni, dried beans, and pasta sauce. Bev Portman will deliver the LLI donations.

LLI received a letter from Roxanne Rice, Executive Director of Food for Others, thanking us for the 118 lb. of food that we collected in January. She noted that there are 90,000 people in our area living in poverty, 30,000 of whom are children. You can see that your food donations are greatly needed and appreciated.



Letters of Appreciation for Food Donations

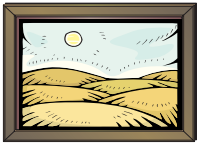
Following each delivery of food items to the community-based organizations, LLI has received a letter of appreciation for the help these donations have provided to so many desperate families and individuals in our communities. (These letters are displayed on the tables where the donations are placed at the Forum.) Usually the letters include the amount (in pounds) donated, which has averaged 125 to 150 pounds per delivery and each organization is grateful for each pound they receive. The LLI board of directors also greatly appreciates the members' support for this outreach program which we began over two years ago. We ask that you continue to bring your food items to the monthly Forum meetings because these donations, great and small, are a definite help to those in need.

Spotlight on New York

Tuesday, Sept. 23 to Friday, Sept. 26, 2008

The LLI four-day, three-night trip to New York City still has several vacancies. Reservations and deposits are due by April 15. In order to make your reservation, call Louise Sousk 703-323-9144 or Betty Pogerman 703-323-7634.

Special Interest Groups



Arts and Smarts

**Donna Trogler 703-751-8932,
DTrogler@aol.com**

On March 28, we are planning to visit the National Gallery of Art to tour the exhibit, "In the Forest of Fontainebleau: Painters and Photographers from Corot to Monet." However, this has not been confirmed as of the newsletter publication. We would like you to join us. If you wish more information, please call Donna Trogler, 703-751-8932.



LLI Bridge Group

**Bob or Merry Huley 703-534-4819,
roberthuley@cox.net**

In March, we will play on Thursday, March 13, and Wednesday, March 26. Note, the first date is a Thursday, not our normal Wednesday. **Location:** Mason District Governmental Center. **Time:** 10 a.m. to 2 p.m. Bring a bag lunch.

You do not need a partner because we rotate partners so you will play with everyone. We are always looking for new players, and all levels of players are welcome in this very friendly game. Please call, or e-mail me, if you would like to attend (or for more information) so we can provide sufficient card tables.

January Results — Top three finishers on January 30 were Jeanne Nilsen, Bob Huley, and Betty Yeary. Congratulations to all.



Community Theater Group

Helen Clark 703-573-1671

On January 27, a number of LLI members thoroughly enjoyed a wonderful performance of "Red, Hot and Cole" at the Alden theater in McLean. When Helen returns from her latest travel adventure, she will plan another theater outing.



LLI Current Events Group

Date: Friday, March 7, 2008

Time: 10 a.m. to 11:30 a.m.

Place: Mason District Governmental Center, Small

Conference Room

Topic: The Presidential Primaries and Your Issues?

- ◆ Do the winning Virginia candidates reflect your issues?

- ◆ Do we know eventual party nominees?
- ◆ How do you feel about the 2007-2008 primary season?

Please join us if you want to share your ideas or learn more about current events. We want to give all who wish a chance to speak. After an hour, we choose the next topic. Then we have open discussion on current events of interest to anyone. For more information, e-mail Shirley Lotz at svlotz@cox.net or call at (703) 978-2977.



Favorite Books Club

**Arlene Gribben, 703-569-0357,
arlenegribb@aol.com**

In March the club members will discuss Frank McCourt's "Teacher Man." If you read the last newsletter, you may say, "wait a minute — they were to discuss this book in February." Well, because of a canceled meeting in January, the book reviews have slipped a month. So, join us on Thursday, March 20, at 11:30 at the Mason District Governmental Center. We'll review this true story about an Irishman who came to America and spent nearly 30 years teaching in New York City public school classrooms.



Gourmands

**Sarah Bell 703-978-4763 and
Mary Underwood 703-329-8391**

On February 29 the Gourmands will be dining on Persian cuisine at Shamshiry Restaurant at Tysons Corner. Bev Portman (703-560-6740) and Marianne Moerman (703-751-0523) have planned this event. Our adventurous lovers of food and fun have not been able to plan an event for March, but do intend to plan one for April. If you wish to introduce the group to your favorite ethnic foods or one of your favorite restaurants, contact either Sarah or Mary to find out the particulars and an announcement will be made in the next newsletter.



Walkabouts

**Liddell McLeod 703-698-8366,
Liddell_mcl@cox.net**

On Friday, March 7, and Friday, March 21, from 12 Noon to 1 p.m., the LLI Walkabouts will meet at Wakefield Park in the parking lot on the left near the ball field closest to the park entrance. For directions, or more information call Liddell McLeod.

From the LLI Scrapbook



President Dick DiBuono thanks February Forum speaker Ms. Kathleen Styles



LLI's cheerful volunteers who "get the word out": Edit the Newsletter, maintain the web site, mail catalogues & newsletters, and process registrations.



LLI's adventurous Trip Committee arranges travel near and far



Administrators of LLI's operating funds: Administrator, Treasurer, Audit Committee, Budget & Finance Committee



Leah receives her Proclamation from the Mayor.

Leah Porzel Honored

Continued from page 3

two. She has also been a member of the Board of University Women for over 50 years and is a Delta, Delta, Delta sorority sister. The Proclamation was a great tribute that prompted a rousing Happy Birthday from all attending.

A charter member of LLI, Leah has chaired special events, stapled and stamped her way through hours of office duties, volunteered on many LLI committees and traveled on most LLI day trips, and Study/Travel Foreign trips. LLI is fortunate to have Leah as one who contributes her up-beat attitude and willing hands.

When asked to speak to the happy crowd, Leah said, "I wish you all will live to be 90 years old so you can have a wonderful party like I have!"

Congratulations, Leah!

Established 1996



Lifetime Learning Institute of Northern Virginia

c/o NVCC Continuing Education
8333 Little River Turnpike
Annandale, Virginia 22003
Phone (703) 503-0600 / FAX (703) 503-5350
E-Mail: llinova@juno.com
Website: <http://lli.nova.org>

NON-PROFIT ORG.
U.S. POSTAGE
PAID
Permit No. 2192
Merrifield, VA

Look at the date on this label.
Is it time to send your dues?

Time Sensitive Material
Please Deliver by
February 26, 2008

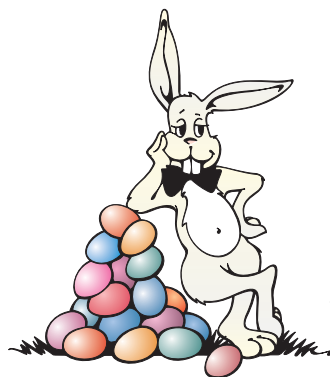
Class Cancellations

If there is inclement weather, LLI classes and other activities, including FORUMS, are canceled (except for bus tours) if the Fairfax County school system cancels school for the day, regardless of the LLI class location and whether or not NVCC holds its regular college classes. Listen for radio and TV announcements. LLI morning classes are canceled if the County announces a two-hour delay in class openings. LLI afternoon classes are canceled if the County announces early dismissal. You will be notified of a schedule for "make-up" classes. Under special circumstances, if a class is not going to be cancelled, registered participants will be notified by the course coordinator. For bus tours, please contact the tour leader (listed in the program booklet).

Happy
St. Patrick's
Day



MARCH
2008



Happy
Easter